



Proposed Plan for Munitions Response Sites AL501A, AL504, AL505-2, and AL505-4

Military Munitions Response Program, Edwards Air Force Base, CA

What is a Proposed Plan?

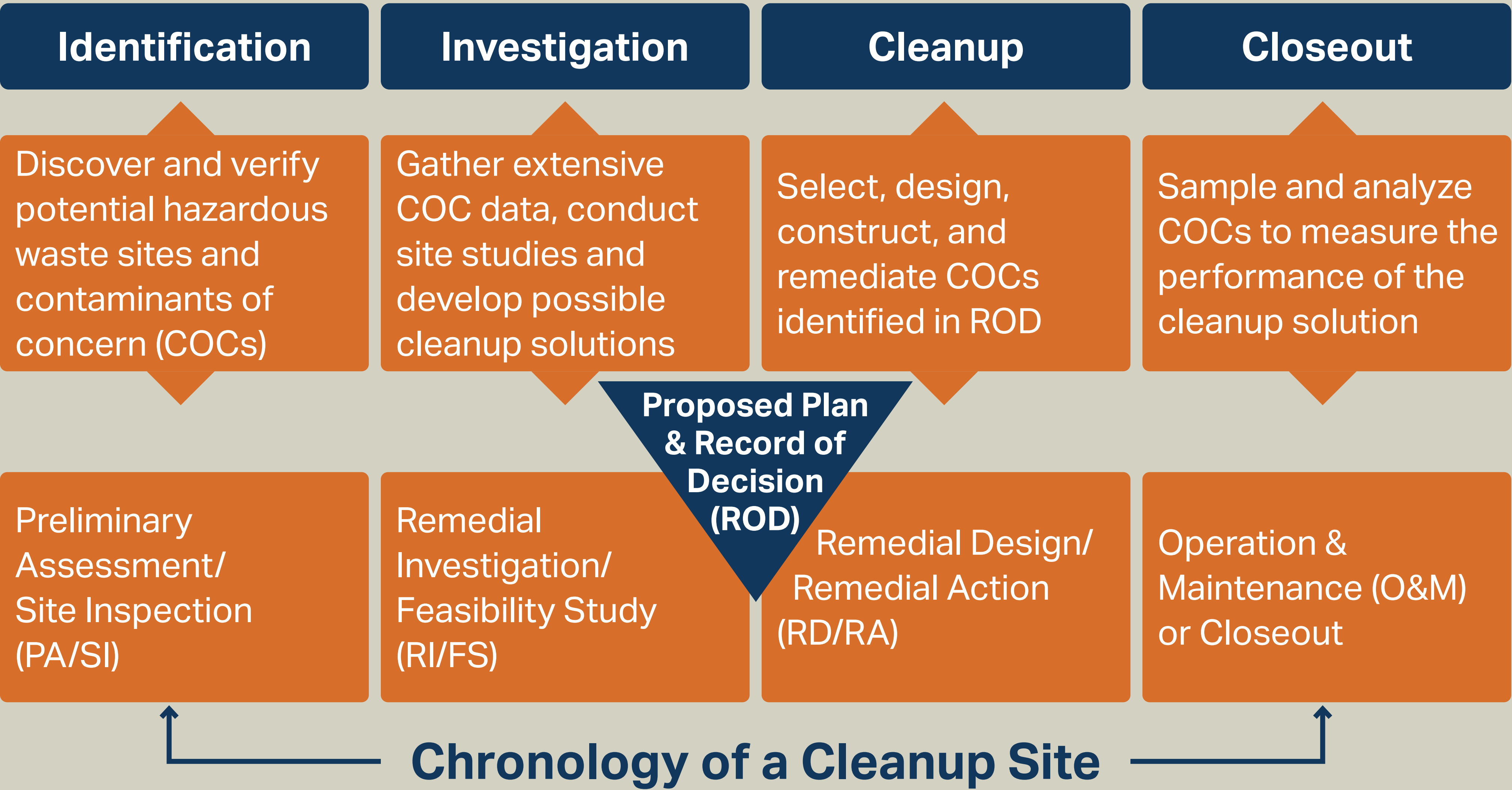
A Proposed Plan is a document specifically prepared for public review and comment that summarizes the feasible remedial alternatives and the preferred remedial alternative identified in a Feasibility Study.

The Proposed Plan for the Munitions Response Sites is being issued in accordance with the public participation requirements in the Comprehensive Environmental Response, Compensation, and Liability Act (CERCLA).

Your input helps the Air Force choose the best way to deal with the hazards at these sites.

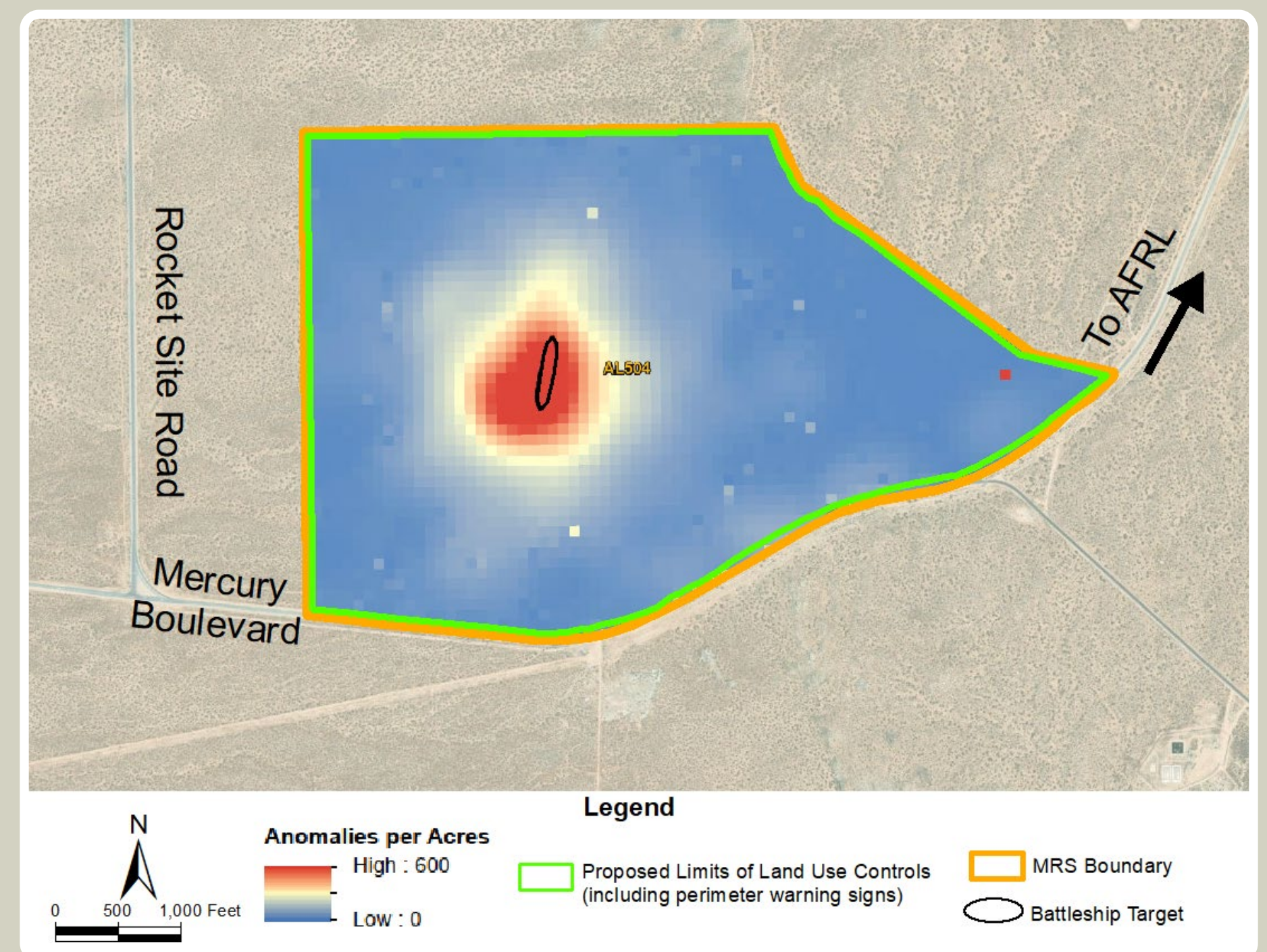
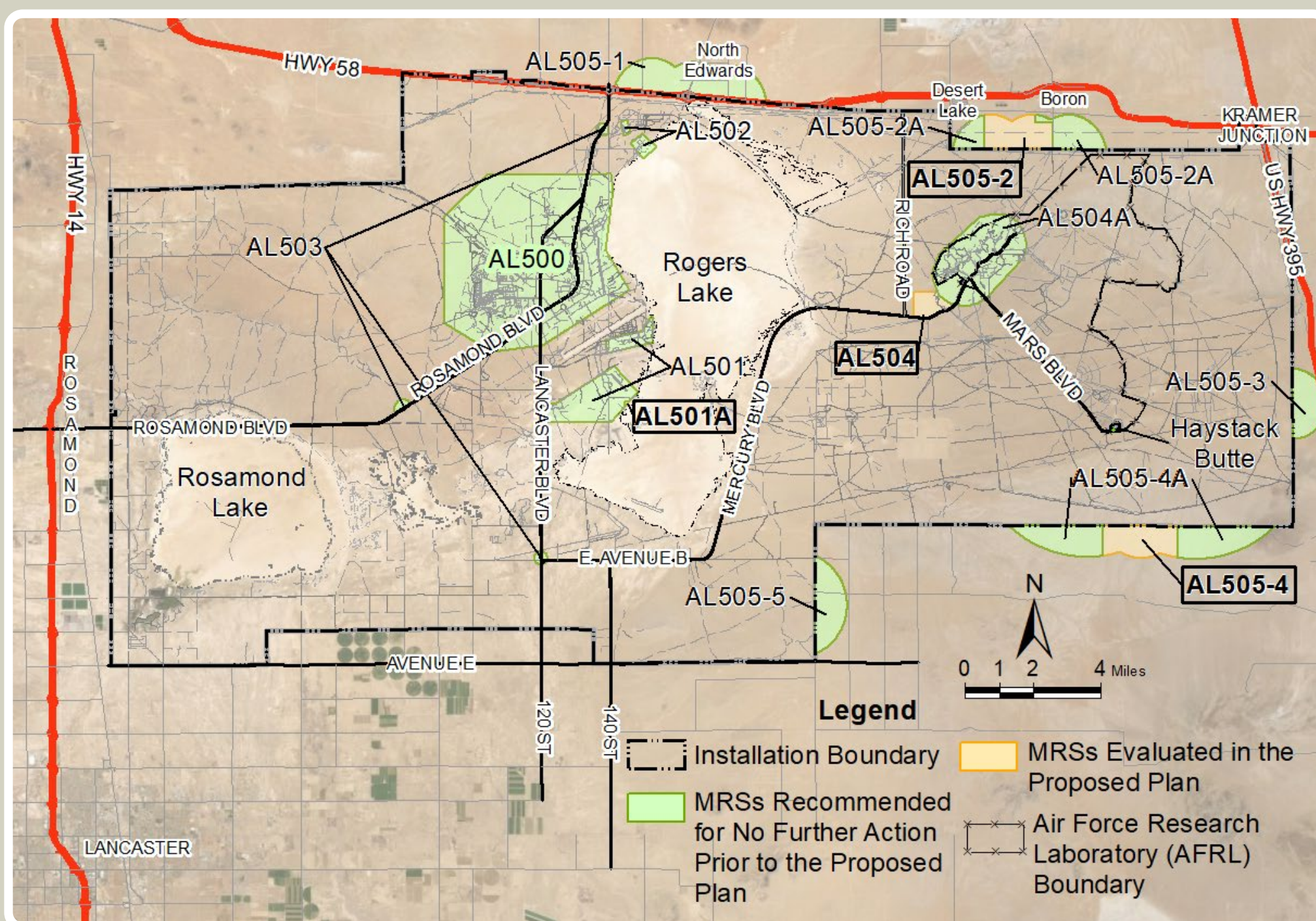


Proposed Plan in the CERCLA Process





MRS AL504 (Former Mock Battleship Target Area)



Location of MRSs on and Adjacent to Edwards Air Force Base

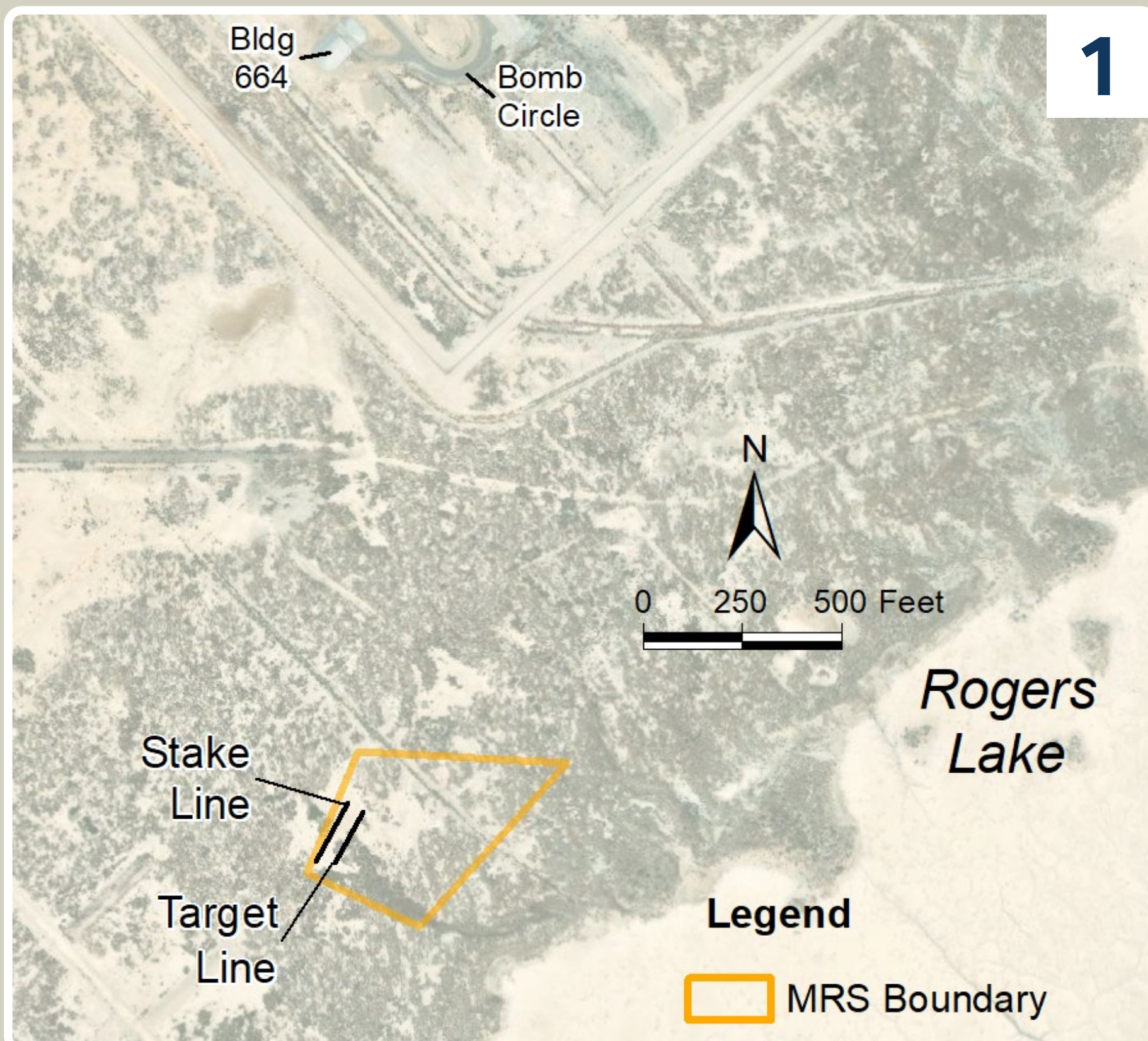
- Munitions Response Site (MRS) AL504 is a former high-altitude aerial bombardment training target located southwest of the Air Force Research Laboratory (AFRL).
- The target was constructed in 1935 using crushed white rock in the shape of a battleship and was used until 1944.
- Previous remedial actions include the removal of munitions and parts of munitions from the ground surface. However, it is likely there remains buried munitions that may pose explosive safety hazards.
- Soil sampling shows that there are no current risks to human health from chemicals originating from military munitions, including metals and explosive compounds.

MRS AL504 with Preferred Alternative 2A Shown

- Remedial Alternative 2A is preferred to address the potential for buried munitions and includes Land Use Controls (LUCs) and Long-Term Management (LTM). Perimeter warning signs will be posted to alert people to potential hazards. The Air Force will use LUCs to restrict future use of the area.
- Alternative 2A is preferred because it's protective of human health and the environment and minimizes construction that may impact sensitive species, such as the desert tortoise.
- The cost for Alternative 2A is approximately \$3.9 million for the first 200 years of management.

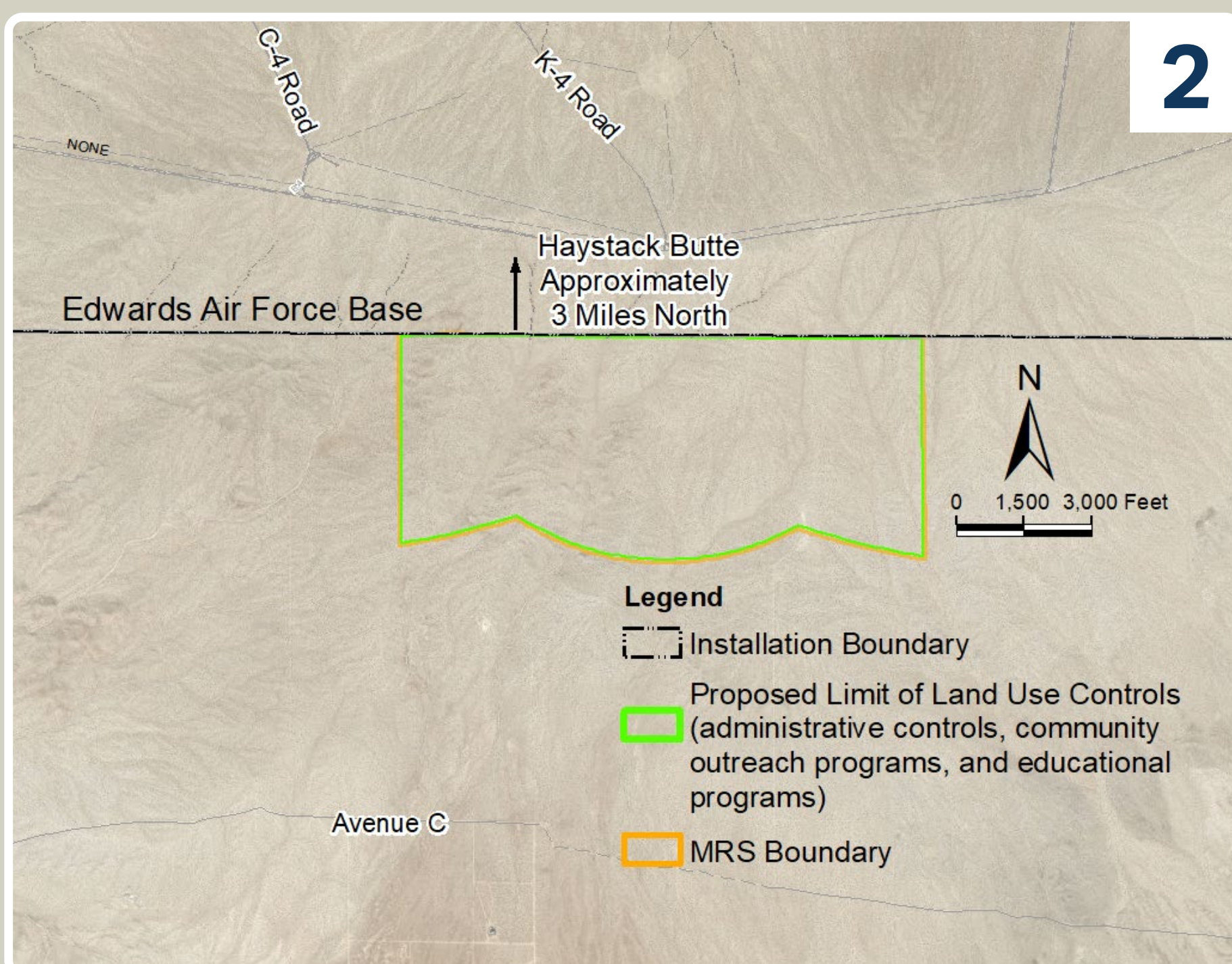


MRS AL501A (Pistol Range) and MRSs AL505-2 and AL505-4 (Off-Base Adjacent Areas)



MRS AL501A (Figure 1) – No Further Action

- Munitions Response Site (MRS) AL501A is an 8-acre former pistol range, located near the South Base runway on the shore of Rogers Lake; the range was used between 1933 and 1944.
- Between 2015 and 2016, lead bullets were removed from the ground surface, and sampling indicates that lead in soil does not pose an unacceptable risk to human health and the environment.
- There are no explosive hazards present.
- No further action is recommended at MRS AL501A.



MRSs AL505-2 (Figure 2) and AL505-4 (Figure 3) with Preferred Alternative 2 Shown

- MRSs AL505-2 and AL505-4 are overshoot areas for former bombing targets and include privately owned and public land not controlled by the Air Force.
- Remnants of munitions such as fragments, penetrators, projectiles, shell casings, links, and fins were found and removed from both sites. Although these remnants do not pose an explosive risk, their presence indicates that munitions and/or chemicals from them may also be present. Because the investigation did not cover 100% of the sites, a low potential for hazard to people from munitions remains.
- Alternative 2 is preferred for both sites and includes Land Use Controls (institutional controls) limited to administrative actions, community outreach programs and educational programs.
- The cost for Alternative 2 at each site is approximately \$3.4 million for the first 200 years of management.

