



R-2508 COMPLEX PILOT GUIDE 12 February 2018

R-2508 Complex Airspace Management Office
Central Coordinating Facility (CCF)
100 S. Sparks Drive, Edwards AFB, CA 93524
Comm: (661) 277-2508; DSN: 527-2508

CCF online information at:

<http://www.edwards.af.mil/Home/R-2508> or CCF SharePoint
for CCF Online Daily Schedule & Information (Requires CAC
and user account):

<https://cs2.eis.af.mil/sites/12162/default.aspx>

ANNUAL BRIEFING REQUIREMENT: All units and
civil LOA holders must receive the R-2508 Complex Users
briefing from CCF, or their Sponsoring Command, prior to
flying in R-2508 Complex airspace and annually thereafter.

SCHEDULING:

All activities must be scheduled. The Complex Clearance is
valid 30 minutes prior to 1 hour after the scheduled time.

- Schedule with CCF by 1600(L) one working day prior
to the date of intended use.
- Schedule ALL weekend/holiday events NLT
1600 (L) the last working day prior.
- Changes to previously scheduled events shall be
coordinated with CCF 0600-1800 local, daily.
After hours call 1-866-805-2851.

DD Form 175, Military Flight Plan:

File two IFR legs; one to enter, and one to exit the
Complex. File 'R-2508' as the destination or departure
point. DO NOT file a delay in R-2508.

CONCEPT OF OPERATIONS:

- All Complex airspace is VFR, See and Avoid, non-
exclusive use airspace.
- All Complex operations require an operational
transponder and Mode C and use of the
local altimeter setting.
- Do not select targets of opportunity.
You may be committing a security violation.

→ Aircraft shall accept traffic advisories from **JOSHUA
Approach, China Control, or SPORT** unless
previously coordinated.

→ Work Area Frequencies:

ISABELLA	335.6 / 134.05
OWENS	322.3 / 126.55
SALINE	256.8 / 123.95
PANAMINT	291.6 / 120.25

→ Control Facility Frequencies

JOSHUA	348.7 / 133.65
SPORT	343.7 / 132.75
China Control	301.0 / 128.25
Bicycle Lake	281.45 / 126.2

→ **Low-level Procedures:** Extended flight activities
below 1,500 feet AGL in the Complex **SHALL** use
315.9 MHz to the maximum extent possible. This
frequency is NOT monitored by ATC, calls are pilot to
pilot only. Call entry, exit, and geo reference points
enroute.

→ **Complex Common:** 256.275 MHz Used as a Unicom
for "airborne airspace coordination and de-
confliction". Aircrews may request Joshua have
desired aircraft "Come up Complex Common"
Aircrews request off frequency (if necessary) with
Joshua before switching to Complex Common. Once
coordination or deconfliction is completed, report
back up on Joshua frequency. Not to be used as a
discrete mission or inter-flight frequency. Not
monitored by Joshua, China Control, SPORT, or
Desert Radio.

COMPLEX CLEARANCES:

All participating aircraft must contact Joshua Approach, to
obtain a clearance, prior to operating in the Complex.

→ **SAGE 2: Isabella, Owens, Saline, and Panamint,
FL290 and below.**

→ **PANCHO 3: Isabella & Panamint FL500 and
below; Owens & Saline FL290 and below.**

→ **WAR 2 (Green Flag West only): Saline and
Panamint at and below FL290, Shoshone MOA,
Shoshone North and South ATCAA's at and below
FL230.** If requested, and scheduled for higher
altitudes in the Shoshone ATCAA's, pilots may expect
clearance to those altitudes on a real-time basis.
Operations in R-2502N/E shall be the responsibility of
the pilot to Schedule and receive approval from the
Using Agency, NTC Ft. Irwin.

→ Operations in the Barstow MOA, Barstow East and
West ATCAA's shall be the responsibility of the pilot
to schedule with CCF. Requests, and or clearances, to
work in areas other than those listed above, will be
issued separately.

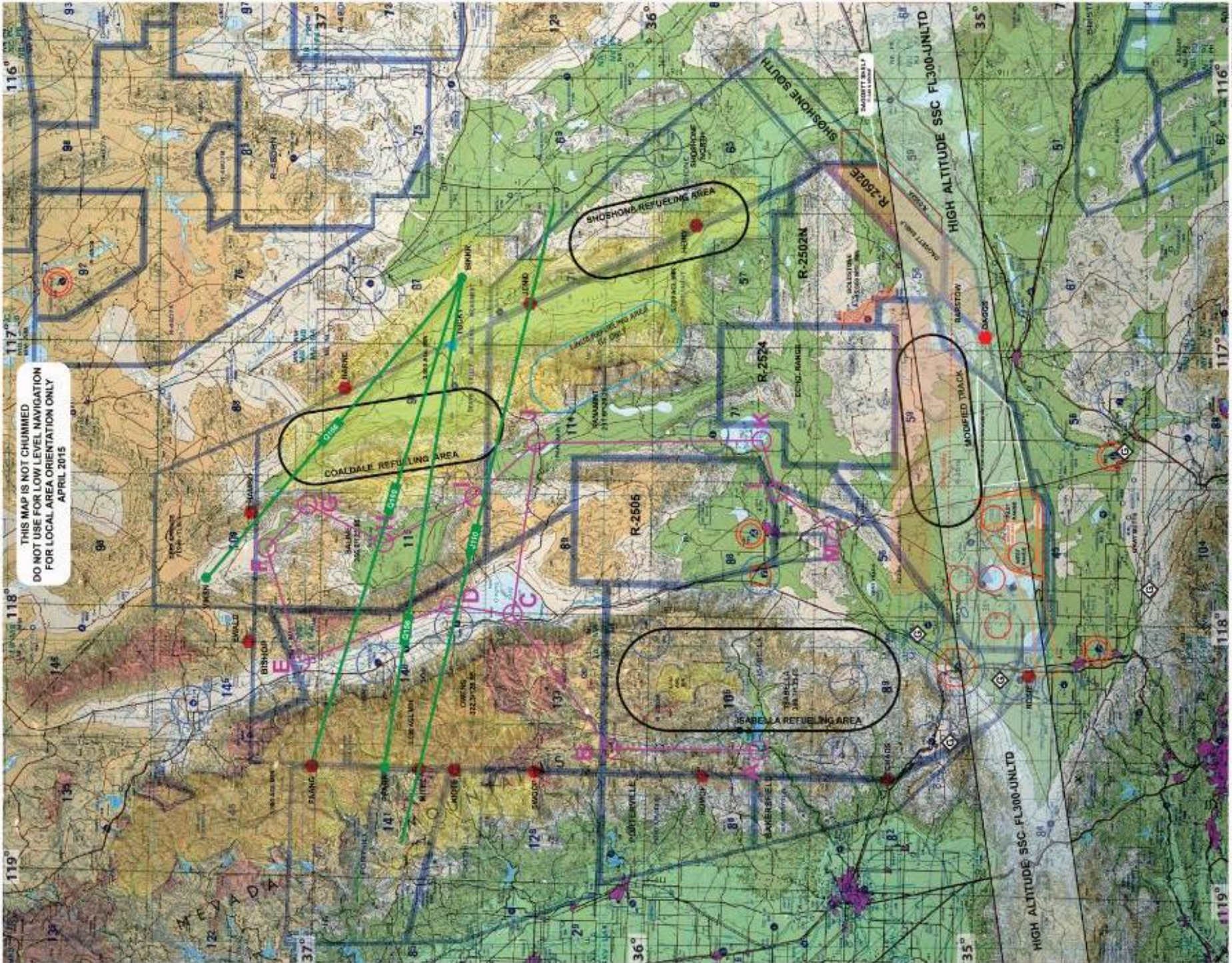
→ Entering internal restricted areas requires separate
scheduling/approval with scheduling/using agency.

OVERFLIGHT RESTRICTIONS:

- **Overflight of Sequoia/Kings Canyon National Parks is
restricted to at or above 18,000 MSL unless scheduled
lower through CCF, Death Valley National Park, Dome
Land and John Muir Wilderness Areas is restricted to
3,000' AGL & 3,000' laterally. Strictly Enforced!**
- **Overflight of communities is restricted to 3,000' AGL
unless operating on an approved test plan; charted
airports by 1,500' AGL or 3NM; Mojave Airport Class D
airspace (4,800' MSL).**

Complex ACTIVITIES:

- **Refueling areas** are NOT protected airspace.
Non-participants avoid observed refueling formations
by 5nm and 2,000ft.
- Units participating in R-2502 exercises may exit north
of the restricted area, into Panamint for IP to TGT
runs, and may not be on Joshua frequency.
- **'Lights-Out'** operations are allowed in R-2505,
R-2524, or R-2502N/E or as specified in the complex
user's handbook.
- **Flares** are allowed in internal restricted areas only,
and must be prior-coordinated with the restricted area-
scheduling agency.
- **Electronic Counter Measures (ECM)** must be pre-
coordinated with Base Spectrum Managers. Inform
CCF of these activities when scheduling.
- **Supersonic flight** is authorized in the High-Altitude or Black
Mountain supersonic corridors only. Schedule with **EDW
ROC at DSN: 527-3940, Comm (661) 277-3940**.
- **Intense civilian activities** in the Mojave, California City,
Tehachapi and Inyokern Airport areas, generally 12,000'
MSL and below. Glider activity along southern Sierras
FL180 and below, & higher during Wave Camp (Dec-April).



THIS MAP IS NOT CHUMMED
DO NOT USE FOR LOW LEVEL NAVIGATION
FOR LOCAL AREA ORIENTATION ONLY
APRIL 2015

COALDALE REFUELING AREA

SHOSHONE REFUELING AREA

SABELLA REFUELING AREA

MODIFIED TRACK

