



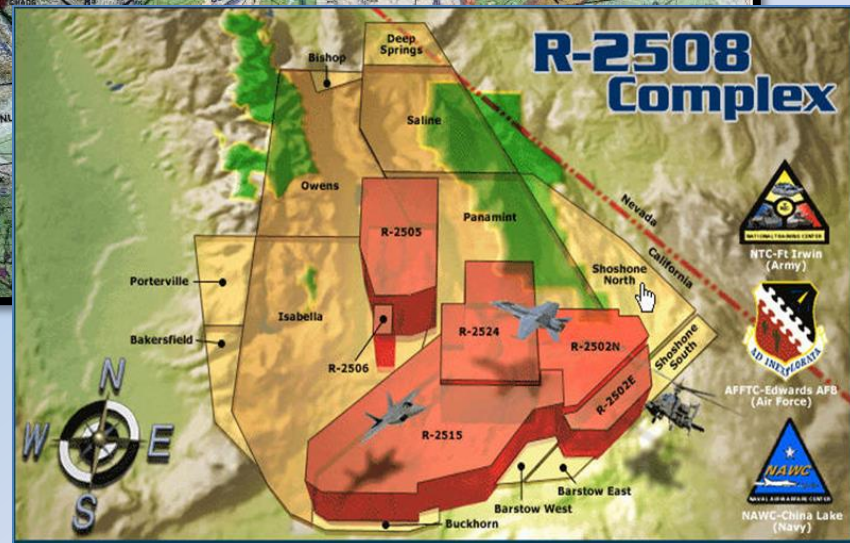
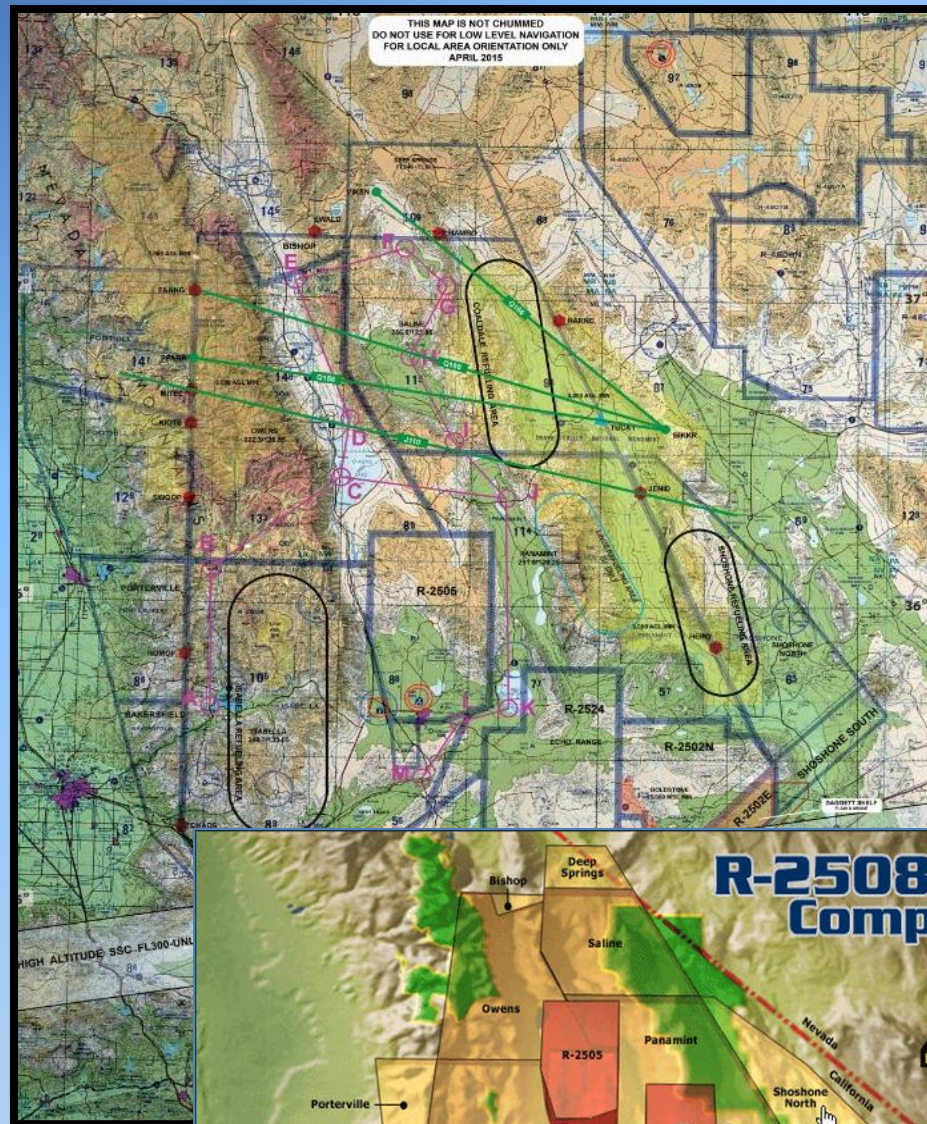
R-2508

Annual User's Briefing

24 April 2020

WELCOME!

- Airspace Layout
- Concept of Operations
- Overflight Restrictions
- Low level Procedures
- Standard Op Procedures
- Special Activities/Areas
- Scheduling/Flt Plans
- SITREPS
- On Line Info





R-2508 Annual Users Briefing

Restricted Areas:

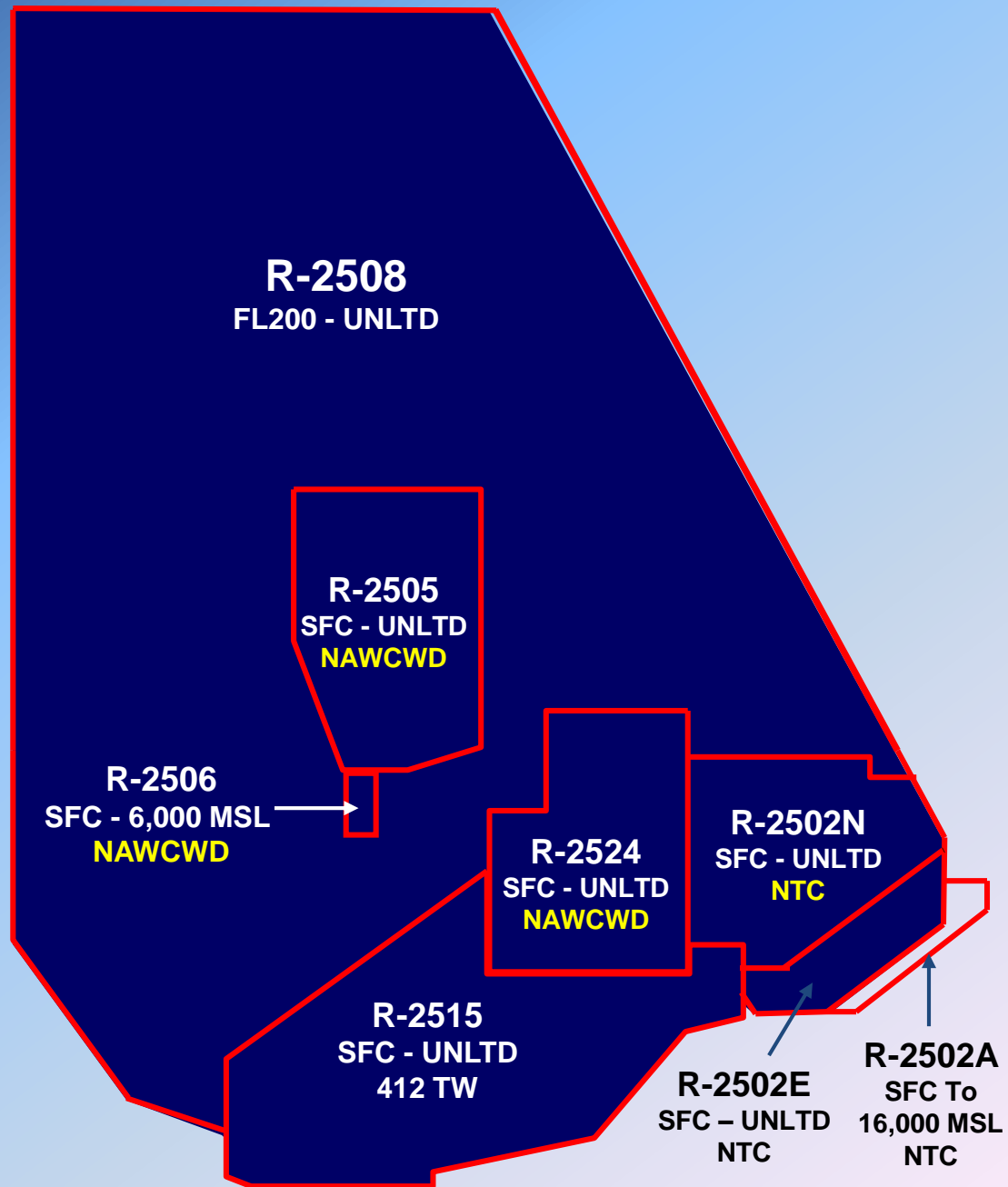
- Schedule R-2508 with CCF
- Schedule Internal Restricted Areas with Using Agency and CCF To Transit MOA/ATCAA Airspace

Using Agencies:

R-2505, R-2506, R-2524: NAWCWD

R-2515: 412TW

R-2502N, R2502E, R-2502A: NTC





R-2508 Annual Users Briefing

MOA & ATCAA Airspace

Military Operations Areas & Air Traffic
Control Assigned Airspace

JOSHUA APPROACH

Frequencies:

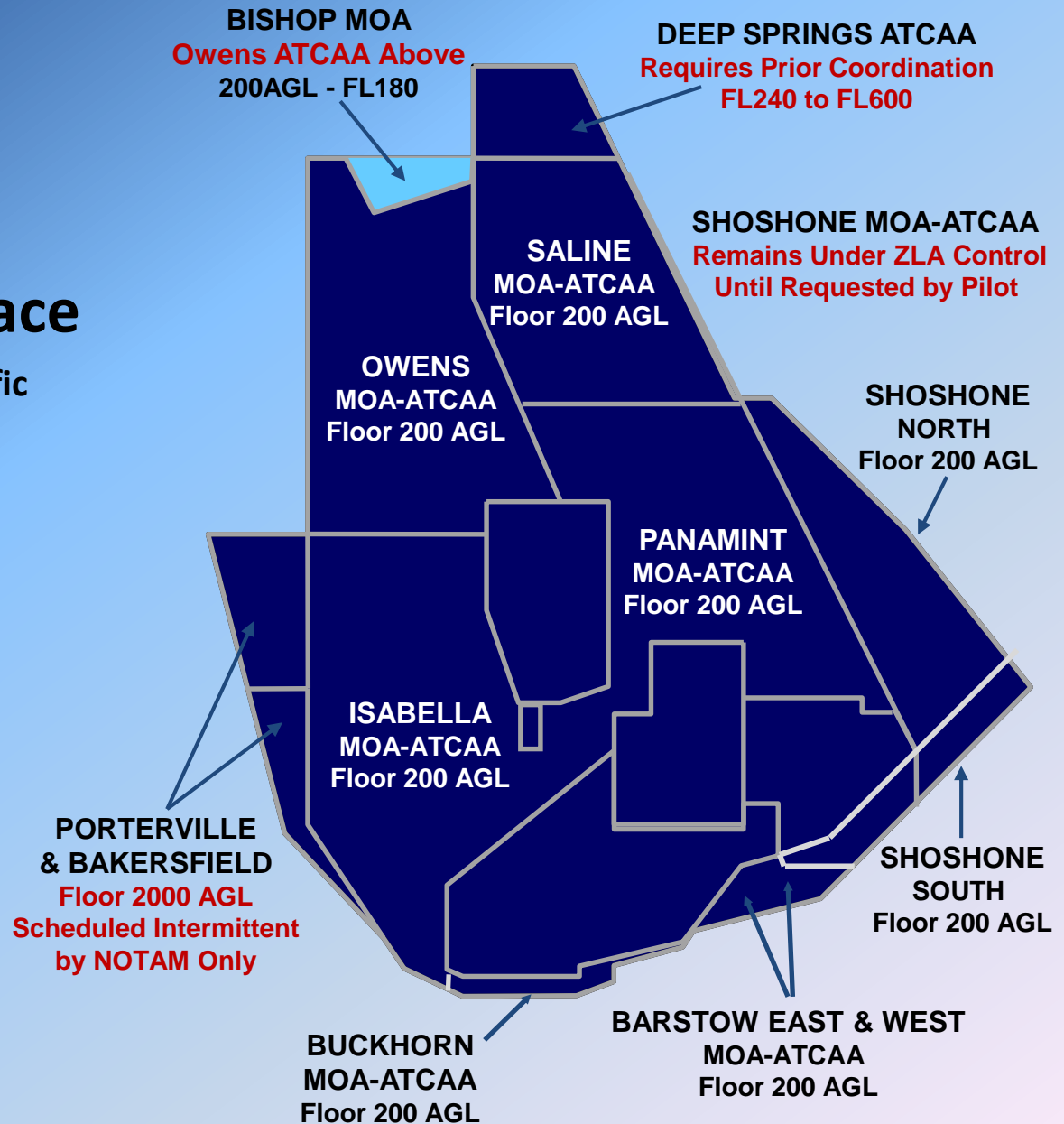
Joshua Primary ATC: 348.7/133.65

Isabella: 335.6/134.05

Owens: 322.3/126.55

Saline: 256.8/123.95

Panamint: 291.6/120.25





R-2508 Annual Users Briefing

Concept of Operations

When the SUA is Activated

- VFR
- See and Avoid
- Non-Exclusive Use
 - Transponder – Mode C
 - Accept Advisory Service
 - Active vs. Inactive Monitoring





R-2508 Annual Users Briefing

IFR Procedures

Not Authorized when SUA is Active

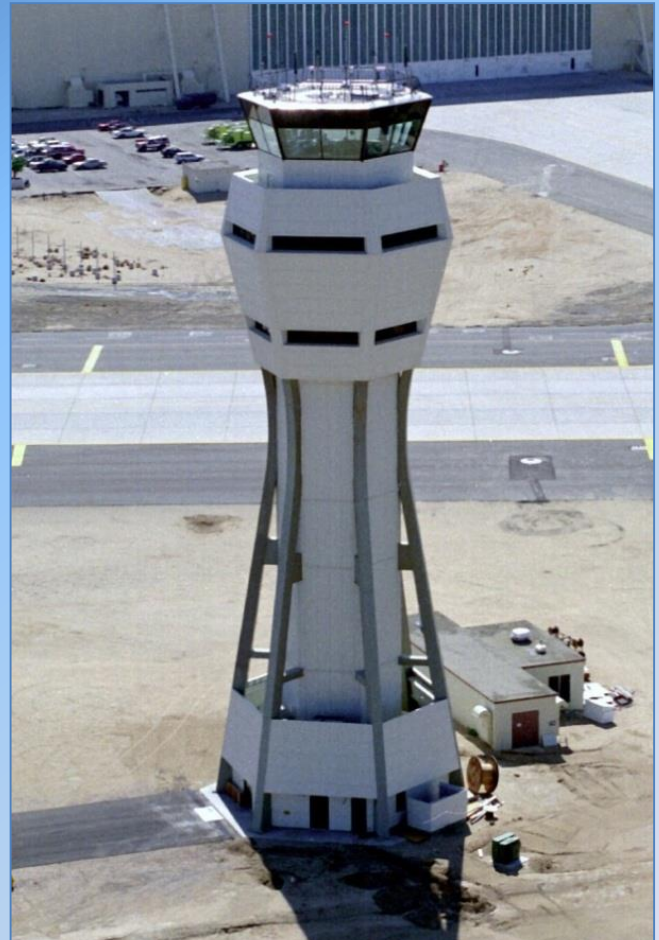
What to do if you encounter an
IMC Condition...

- Advise Joshua Approach
- Expect IFR Clearance
 - On Top or Vectors to VMC
 - IFR Separation applied
between IFR Aircraft only





R-2508 Annual Users Briefing



R-2508 Air Traffic Control (ATC) and Military Radar Unit (MRU) Services

- **Joshua Control Facility, “Joshua Approach”**
 - Traffic & boundary advisories, mission support
 - VFR and IFR Services as applicable within MOAs, ATCAAs, R-2508, and Released Internal Restricted Areas
- **China Control & SPORT MRU’s**
 - Traffic & boundary calls and mission support services for China Lake (R-2505, R-2506 & R-2524)
 - Edwards (R-2515 Barstow & Buckhorn MOA/ATCAA)
- **Desert Radio, Airspace Information Center**
 - Mission support in R-2502N, R-2502E & R-2502A



R-2508 Annual Users Briefing



Check in Procedures & Situational Awareness

- **Receive Clearance:** Contact Joshua Approach prior to Complex entry and exit. Initial contact shall include a request for a **Complex Clearance and Altitudes**.
- **Provide SA to ATC:** During check-in, **pilots should state their intentions and planned work area using plain language**.
- **Receive SA from ATC:** Joshua Approach should respond with **Work Area Clearance**, relevant **Traffic Information**, and, workload permitting, **work area saturation information**.
- **ATC traffic calls** are based on observed aircraft positions, headings, altitudes and radar limitations. **Rapid changes** in heading or altitude **may not be observed by ATC in time** for the information to be issued in a timely manner. **Aircrews** are encouraged to **Alert ATC** when conducting **rapid heading and/or altitude changes**.



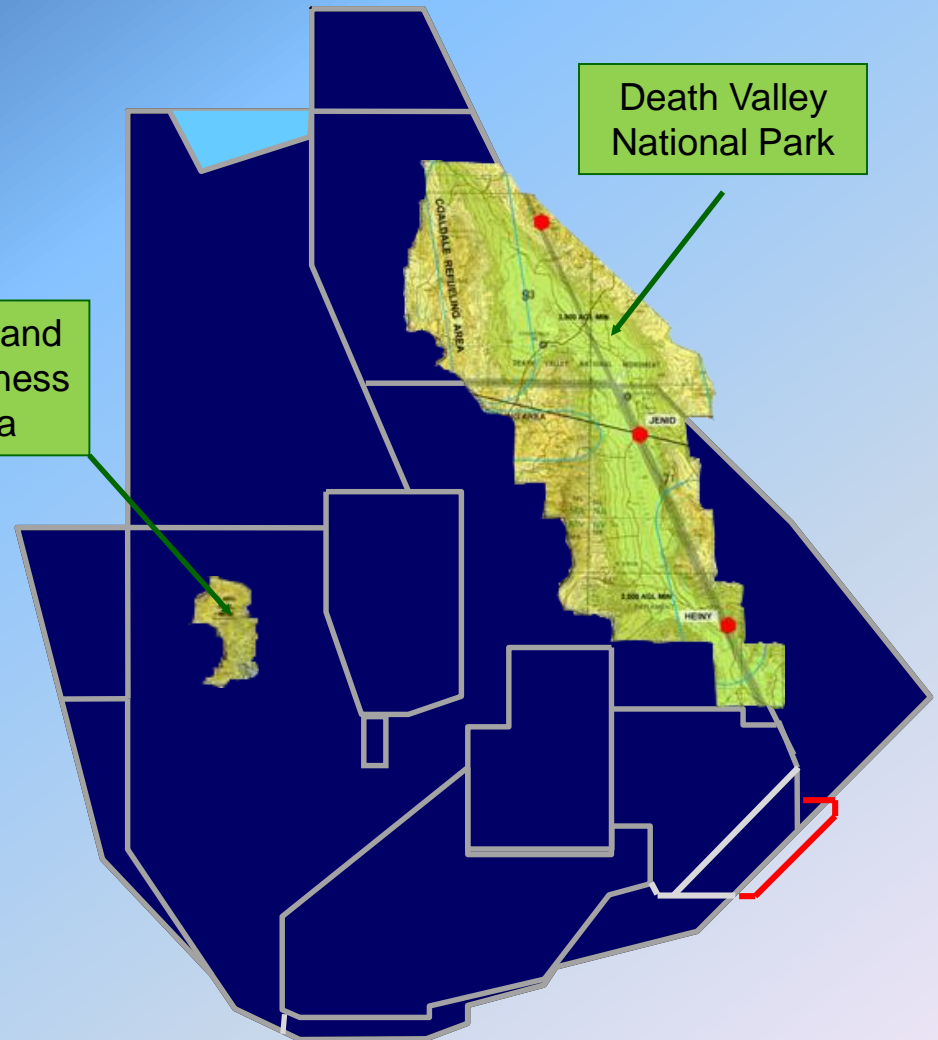


R-2508 Annual Users Briefing

Overflight Restrictions of Death Valley National Park & Domeland Wilderness Area

Floor of MOA over Death Valley
National Park and Domeland
Wilderness Areas Published
Altitude: **3,000 AGL**

- FLIP AP1 California
- FAA JO 7400.8



Remain at least 3,000 feet both Laterally and Vertically from
Death Valley National Park and Domeland Wilderness
Area...3,000 feet from Canyon Walls and Saddles



R-2508 Annual Users Briefing

Sequoia and Kings Canyon National Parks (SEKI)

- All participating aircrews maintain an altitude of **18,000** feet or above over SEKI unless lower altitude is required.
 - If lower than **18,000** is required Annotate “**SEKI**” in Remarks Section of R-2508 Complex Airspace request Form.
- Unscheduled operations below FL180 over SEKI are authorized only for safety of flight considerations.
- At no time will any participating aircraft descend below 3,000 feet AGL within the boundaries of SEKI except in an emergency situation. Lateral separation from SEKI is 3000 feet.





R-2508 Annual Users Briefing

Overflight Restrictions

- Published Civil Airports:

- 1,500' AGL or 3 NM

- Mojave Air & Space Port Class D

- Airspace:

- 4,800' MSL and below

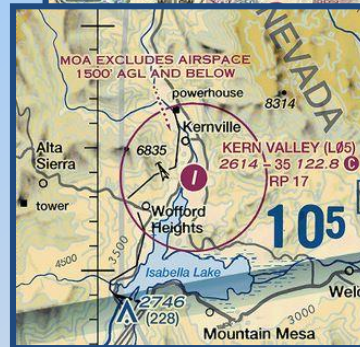
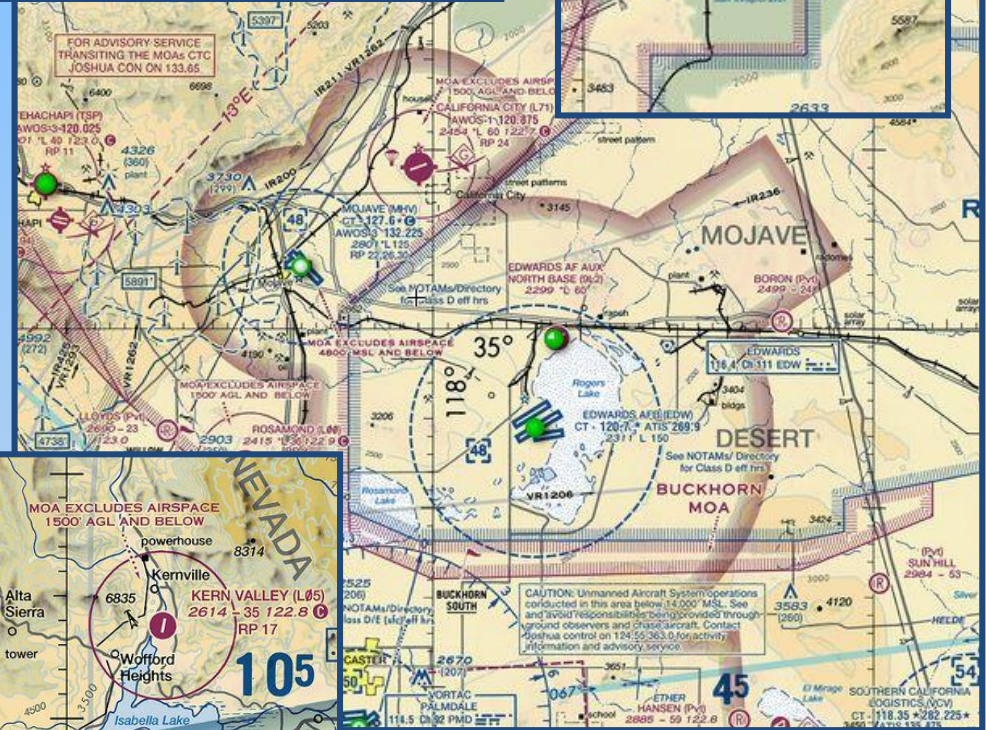
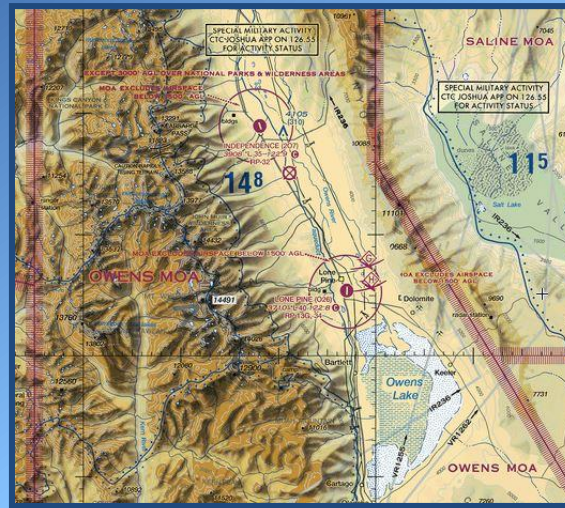
- National Test Pilot's School

- Aircraft & Space Systems development/testing

- Airborne Tow operations

- Community Overflights:

- 3,000' AGL unless operating on an approved test plan





R-2508 Annual Users Briefing

Low Level Procedures

For sustained flight below 1,500' AGL

- Requires notification/check-in with JOSHUA Approach
- Operating frequency - 315.9 MHz, NOT Monitored by ATC/MRU
 - Use as Unicom for blind transmissions, pilot to pilot only
- State Call sign, type aircraft, location and intentions
- Provides cross frequency communication capability with Land Management Agencies



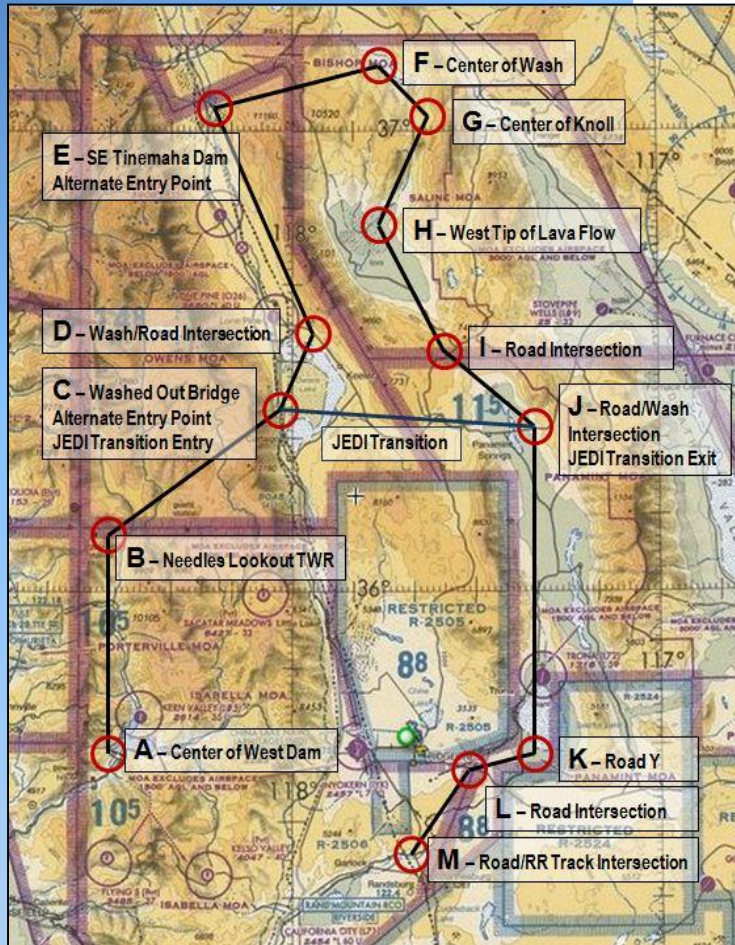


R-2508 Annual Users Briefing

Sidewinder Low Level with JEDI Transition

**ALL AIRCRAFT MAINTAIN 1500
FT AGL OR ABOVE OVER STAR
WARS CANYON UFN.**

- All points must be flown in a clockwise direction, sequentially i.e. A, B, C... M, or C, D, E... O, etc. Opposite Direction Flight Prohibited
- Preferred alternate entry via points C or E
- JEDI Transition: Proceed East from Point C to Point J
- Annotate "Sidewinder" in remarks section of R-2508 Airspace Request Form.



SIDEWINDER LOW LEVEL (Rev 2) 11 Feb 2015

CAUTION: These are R-2508 procedural controls for local use only. Points will be flown sequentially (i.e. A, B, C...M or C, J, K...M, etc). **OPPOSITE DIRECTION IS PROHIBITED.**

The SIDEWINDER and JEDI Transition are not published MTRs.

ROUTE DESCRIPTION:

PT	Lat/Long	Pt Description/Elevation
A	N 35 38.75 W 118 28.94	Ctr of West Dam/2575
B	N 36 06.60 W 118 29.12	Needles Lookout Twr/8107
	36 24.74 118 00.57	Washed Out Bridge/3615
	36 35.61 117 58.53	Wash/Road Int/3635
	37 02.88 118 12.79	SE Tinemaha Dam/3894
	37 09.18 117 46.19	Center of Wash/2956
	37 02.17 117 37.09	Center of Knoll/4738
	36 47.95 117 45.69	West Tip Lava Flow/1352
	36 30.84 117 34.05	Road Int/6109
	36 20.69 117 21.08	Road/Wash Int/2093
	35 39.34 117 21.62	Road Y/1624
	35 36.61 117 31.56	Road Int/2480
	35 25.40 117 40.32	Road/RR Int/2785

ALTIMITUDE: NLT 200' AGL to 3000' AGL
B); NLT 200' AGL (points B to K); NLT 500' K to M). Climb as required to avoid noise as and airports (note 8).

DTH = 2 NM either side of centerline.

Operating Procedures:

Entry Procedure: Prior to entry notify Joshua of intentions and planned Entry/Exit point. Above 800 AGL and prior to route entry make intentions call on Low Level Common (315.9). Give way to any traffic already established on the route prior to entry.
To B remain above 3000 AGL until 3 NM North Kern Valley Airport to avoid Lake Isabella and surrounding communities.

- (3) Alternate Entry: This is a procedural control and traffic may enter at any point. Preferred alternate entry points are C and E.
- (4) Alternate Exit: This is a procedural control and traffic may exit at any point. Preferred alternate exit points are H and K.
- (5) All aircraft operating on the Sidewinder/Jedi Transition will utilize the R-2508 low altitude common frequency 315.9. When entering low level environment transmit in the blind call sign, number and type of aircraft, and intentions. Monitor 315.9 until exiting low altitude regime. Repeat calls entering new areas, or crossing ridge lines.
- (6) Slower aircraft (i.e. C-12, T-34) may be on the route at the same time. Use caution for airspeed variations that may exist between aircraft. Aircraft being overtaken has the right of way.
- (7) To mitigate the risk of opposite direction traffic, offset right of centerline when transiting saddles between valleys. Rising terrain may mask advisory calls.
- (8) Avoid all noise sensitive areas by 3000' AGL or 3000' laterally. Avoid all airports along route by 1500' AGL or 3 NM.
- (9) Point B to C, avoid the extremely noise sensitive areas of Olancha and Cartago.
- (10) Point C to D, avoid the extremely noise sensitive areas of Keefer and Lone Pine. Caution: intensive hang glider activity in the vicinity of Dolomite and northeast shore of Owens lake.
- (11) Caution: high migratory bird activity between F and H during day light hours.
- (12) **CAUTION:** Possible merging traffic from aircraft on Jedi Transition (approaching from west via Point C). Sidewinder users of Bset east of Point J for deconfliction. Sidewinder users make mandatory radio call approaching Point J "Call sign, Sidewinder, approaching Point Juliet". Make calls on 315.9
- (13) Point J to K, 198' multi unit towers N35°53.797 W117°17.558. Avoid Trona Airport by 1500' AGL or 3 NM.
- (14) Point K to M. Watch for traffic northbound to China Lake initial at 4000' MSL.
- (15) Point L to M, route transits underneath instrument procedure at NID (arc and final approach). Use caution if exiting route prior to Point M.
- (16) Conflicts: A to L: IR-236; B to D: IR-1255; E to I: VR-1205-1255-1262; I to L: VR-1262, IR-200; K to M: IR-200-211.

JEDI TRANSITION: At Point C proceed east to Point J. **CAUTION:** Possible merging Sidewinder traffic from the north via Point I. Jedi users offset west of Point J for deconfliction. Jedi users make mandatory radio call approaching Point J "Call sign, Jedi Transition, approaching Point Juliet". Make calls on 315.9.

**Route Map, Route
Description, and Standard
Operating Procedures
Published in
R-2508 User Handbook**



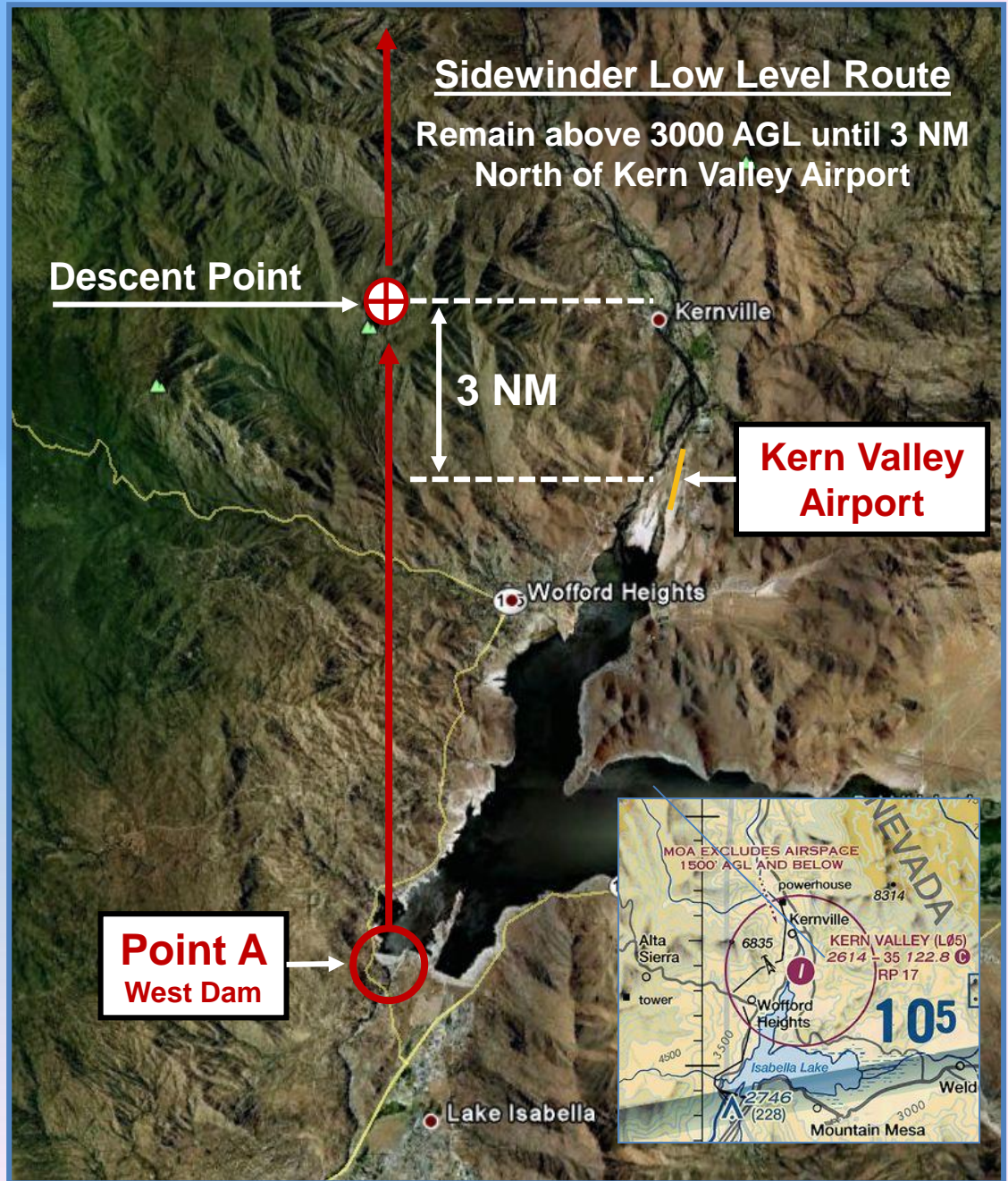


R-2508 Annual Users Briefing

Noise & Low Level Complaints

Sidewinder Low Level Point Alpha to Descent Point

Remain above 3000 AGL
until 3 NM North of Kern
Valley Airport to avoid
Lake Isabella and
surrounding Communities

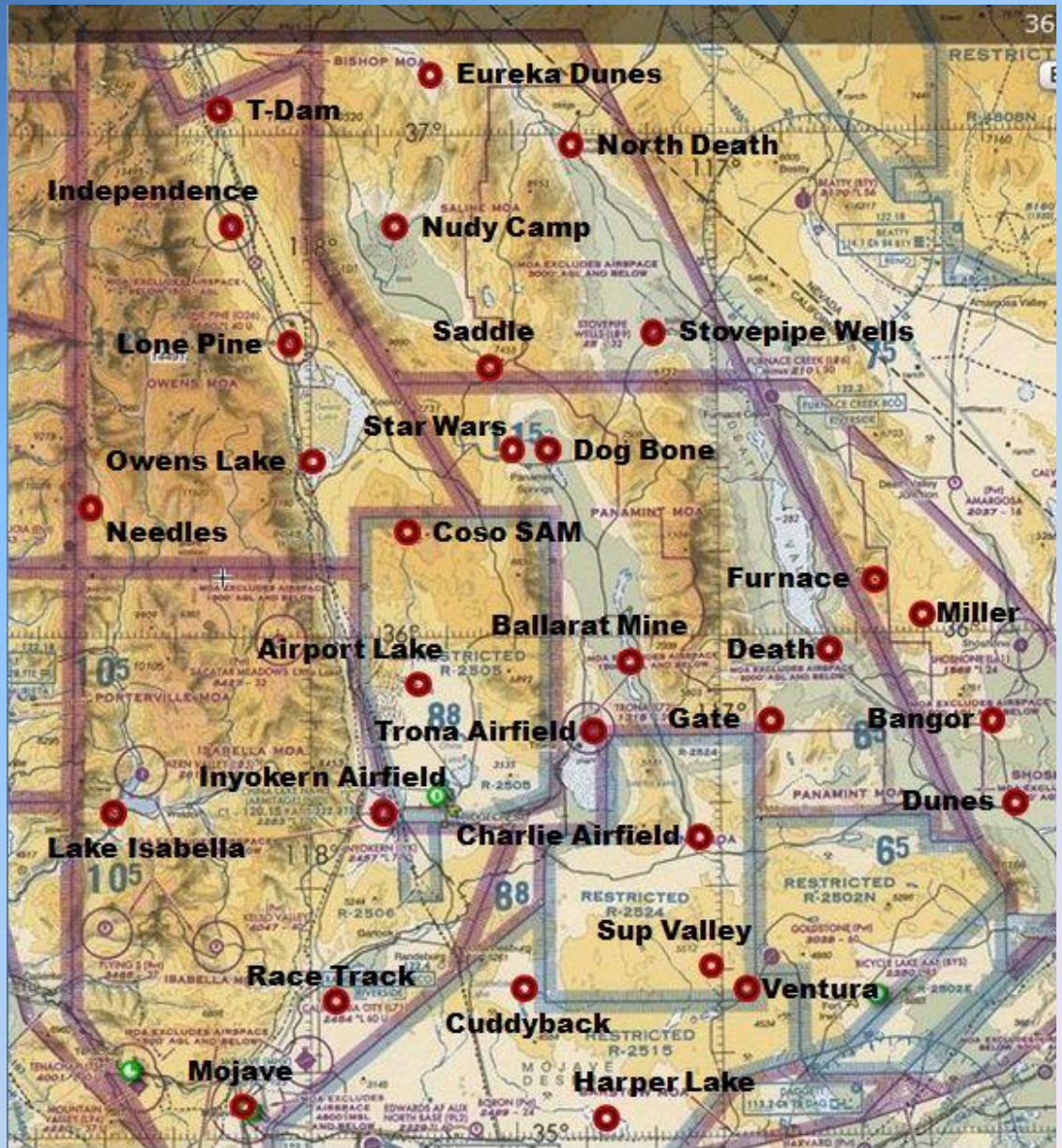




R-2508 Annual Users Briefing

GEO Reference Points

- Easily identifiable ground reference points used to describe aircraft position during low level flight operations on frequency 315.9
- Detailed list of these locations, names and latitude/longitude position listed in R2508 Users Handbook paragraph 5.2.1





R-2508 Annual Users Briefing

• Temporary Flight Restrictions (TFRs)

- Land Management Activity
- Fire-fighting Support ACFT

**SMOKE FROM FIRES STAY
AWAY!**

**Check NOTAMS Prior to Step
Check R-2508 Daily Brief Sheet**





R-2508 Annual Users Briefing

NAS Lemoore/Fresno ANG

Ingress/Egress Routes

• NAS Lemoore

- Entry/Exit via KIOTE & SWOOP FL180 or above only
- Entry/Exit via ROMOF for Superior Valley at FL190/200 to avoid Isabella AR (ARISB)

• Fresno ANG

- Entry/Exit via FAANG & MITEL FL180 or above only
- Use FAANG to avoid Cap Points when active

• Other Uses

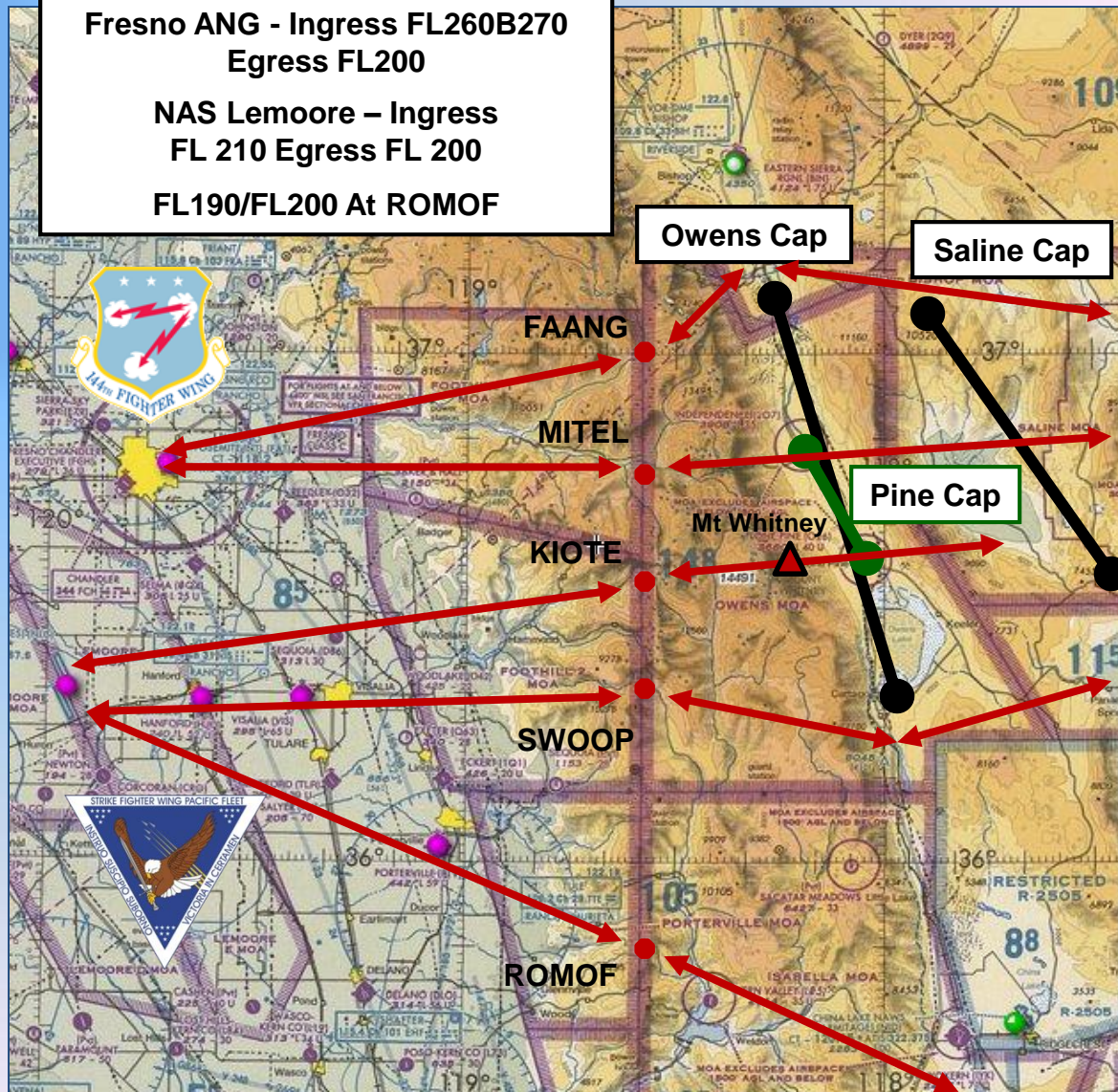
- Be aware of heavy East/West traffic flow across Owen Valley
- Avoid Mt Whitney area

Entry/Exit Point Altitudes

Fresno ANG - Ingress FL260B270
Egress FL200

NAS Lemoore – Ingress
FL 210 Egress FL 200

FL190/FL200 At ROMOF

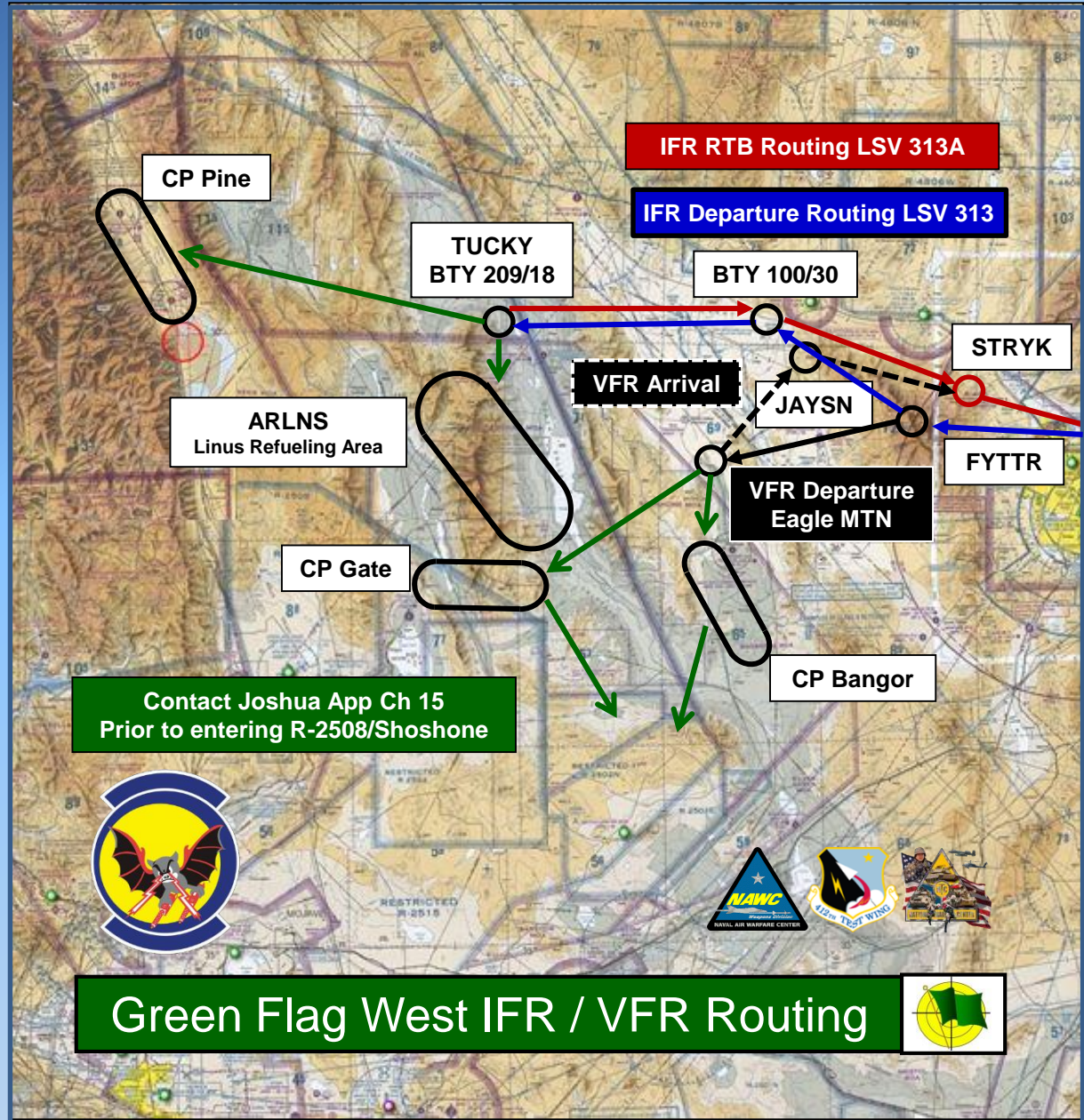




R-2508 Annual Users Briefing

Green Flag West

- **IFR Departure Routing...** via FYTTR..BTY 100/30..TUCKY
 - **IFR RTB Routing...** via TUCKY..BTY 100/30...STRYK
-
- LSV VFR Departure Routing FYTTR..Eagle Mountain
 - LSV VFR RTB Routing Eagle Mountain..JAYSN..STRYK
-
- Refueling Area LINUS (ARLNS) 22K'
 - Lone Pine CAS Orbit Hold at 21K' then operate 20K' to 200 AGL in Owens MOA/ATCAA

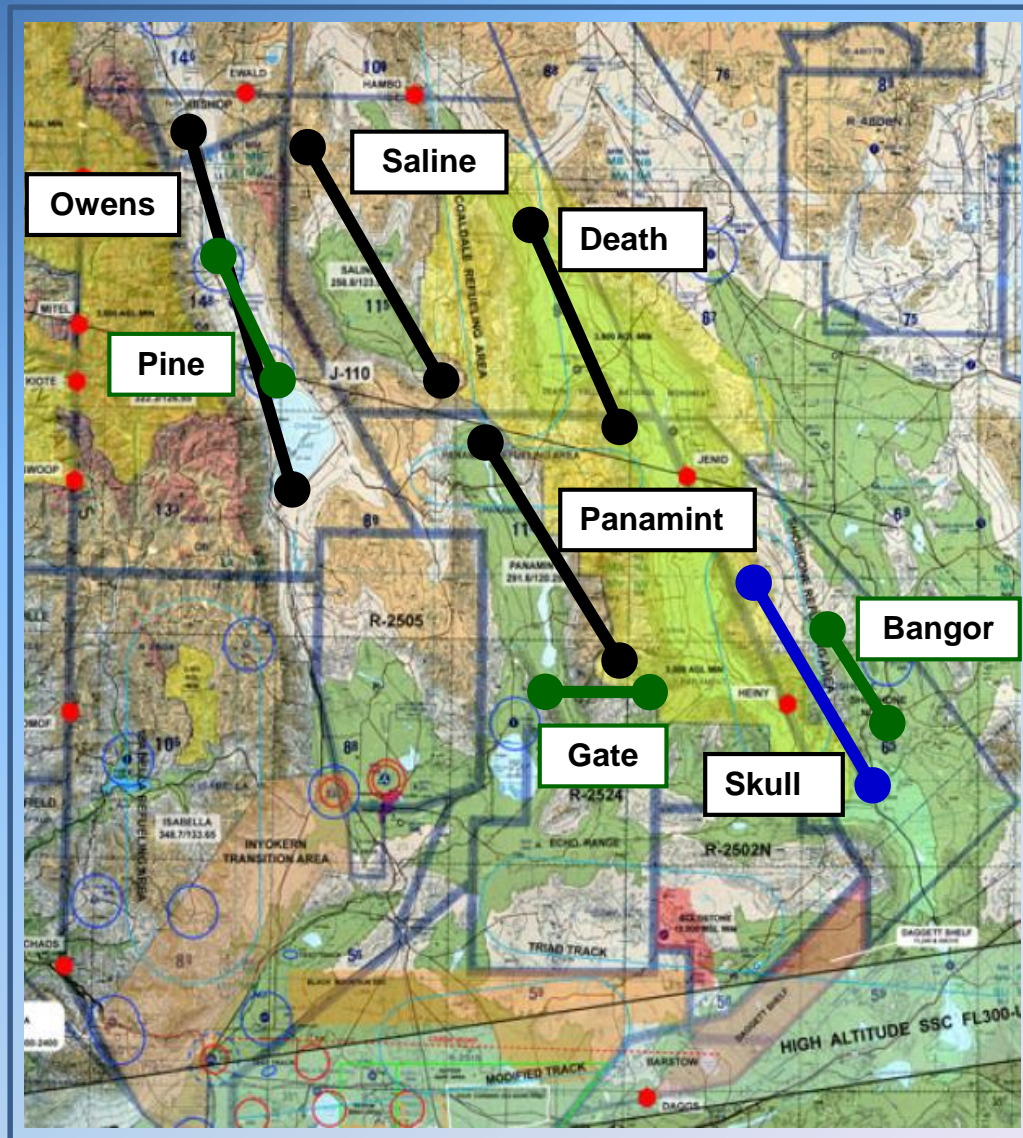




R-2508 Annual Users Briefing

Caps Points

- Used for staging and mission deconfliction.
- Aircraft transiting across working areas shall avoid aircraft actively conducting test or training whenever possible.
- NAS Lemoore - SFWP
 - Owens, Saline, Death, Panamint
- LSV - Green Flag West
 - Pine, Gate, Bangor
- 412 Test Wing
 - Skull

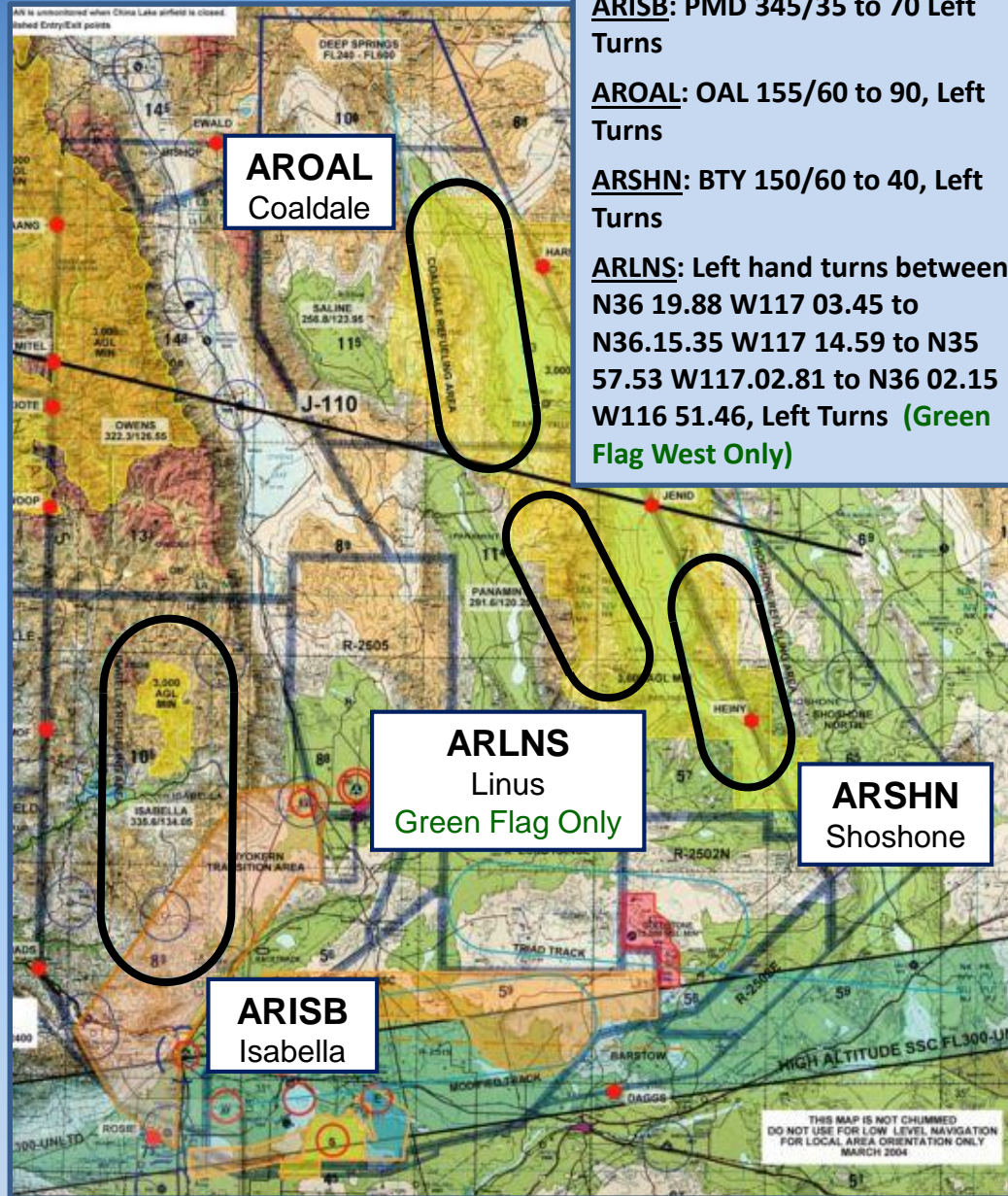




R-2508 Annual Users Briefing

Air-Refueling Operations:

- Refueling areas **NOT exclusive-use airspace** and **NOT PROTECTED** from other Complex aircraft operating in the area.
- Avoid observed tanking operations by a minimum of **2,000 feet vertically** and **5 miles laterally**.
- Standard ARISB Alt Blocks:
FL210B230 / FL240B260 / FL270B290
- Tanker discrete squawks:
0051-0057 (assigned by SPORT)
5253-5257 (assigned by JOSHUA)
- 412 TW assigned/sponsored TNKRS:
Mode 1: Squawk 02
Mode 2: Squawk 7210



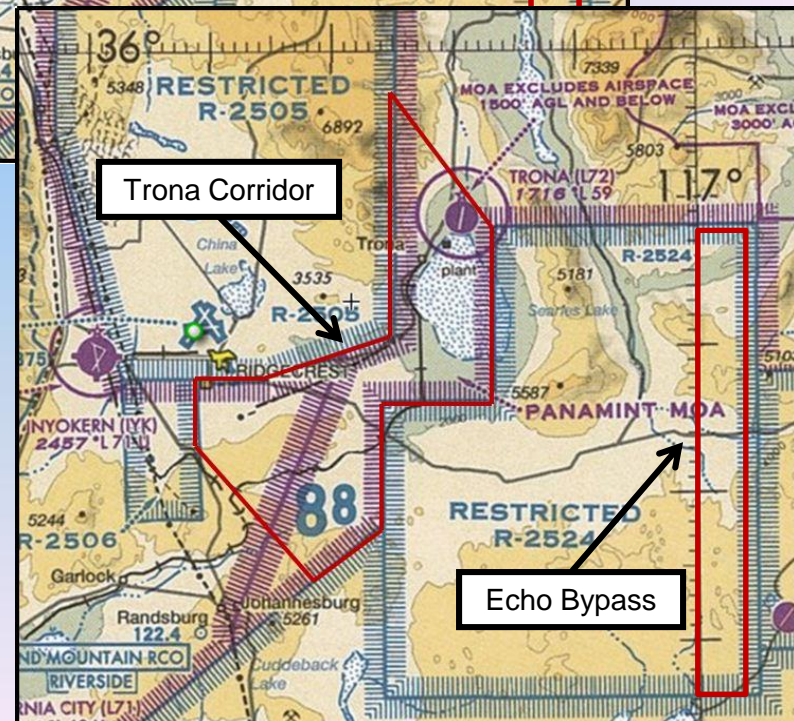
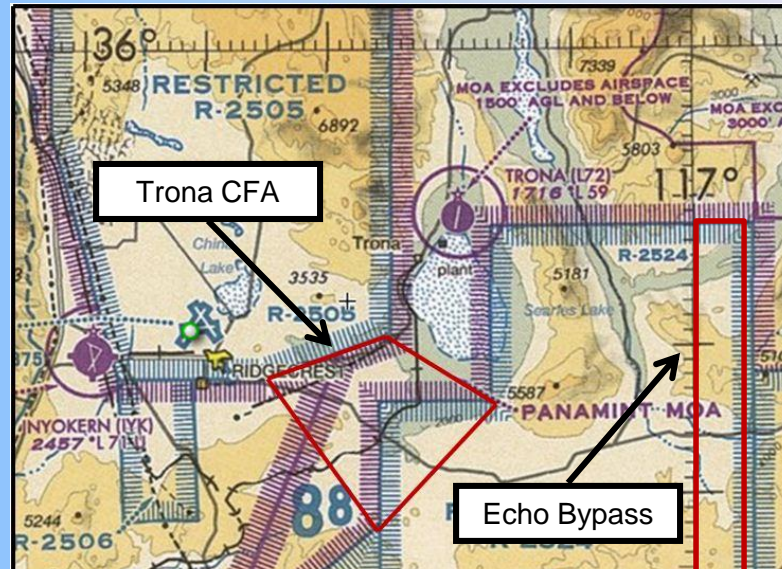
THIS MAP IS NOT CHUMMED
DO NOT USE FOR LOW LEVEL NAVIGATION
FOR LOCAL AREA ORIENTATION ONLY
MARCH 2004



R-2508 Annual Users Briefing

Special Activity Areas

- Trona Controlled Firing Area - CFA
- Altitudes: 3,000 AGL to 20,000 MSL
- Trona Corridor
- Altitudes: 20,000' MSL to Infinity
- Used to Protect Path of Free Flight Weapons Across Trona Gap
- May Be Used in Conjunction
- Echo Bypass may be available for transitions

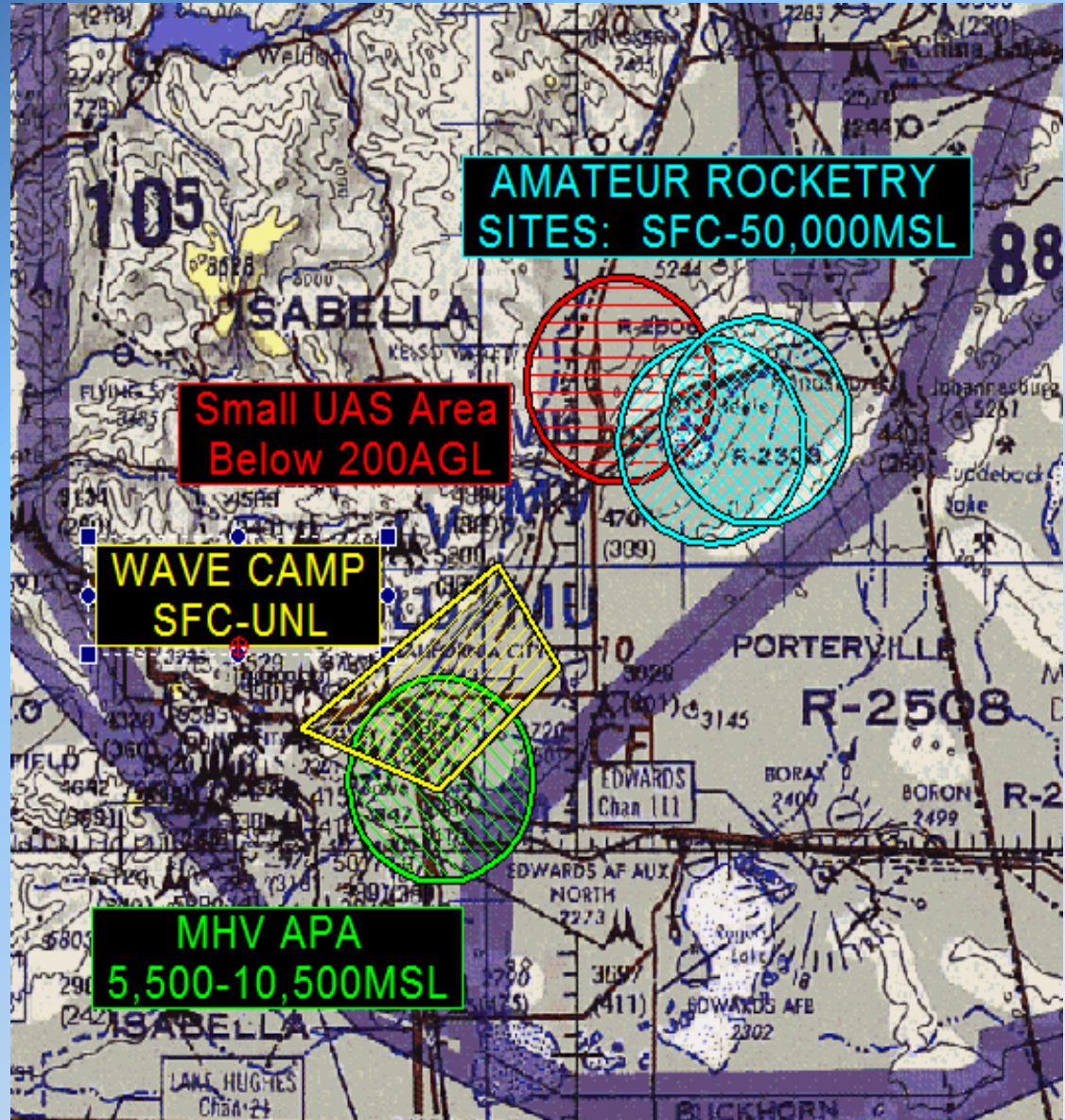




R-2508 Annual Users Briefing

SPECIAL ACTIVITY AREAS

- **Small UAS Work Area**
 - Below 200' AGL
 - Underlies IR211 and VR1262
- **Koehn Dry Lake: Launch Site**
 - Launch Altitudes up to 50,000 MSL
 - sUAS 200AGL M-F / 400AGL WKND
- **Wave Camp Area: Concentrated Glider Activity - All altitudes**
 - Transponder Equipped above FL180
- **MHV Aerobatic Practice Area**
 - 5,500 to 10,500 MSL
 - W/I lateral confines MHV Class D
 - Activated real-time by JOSHUA

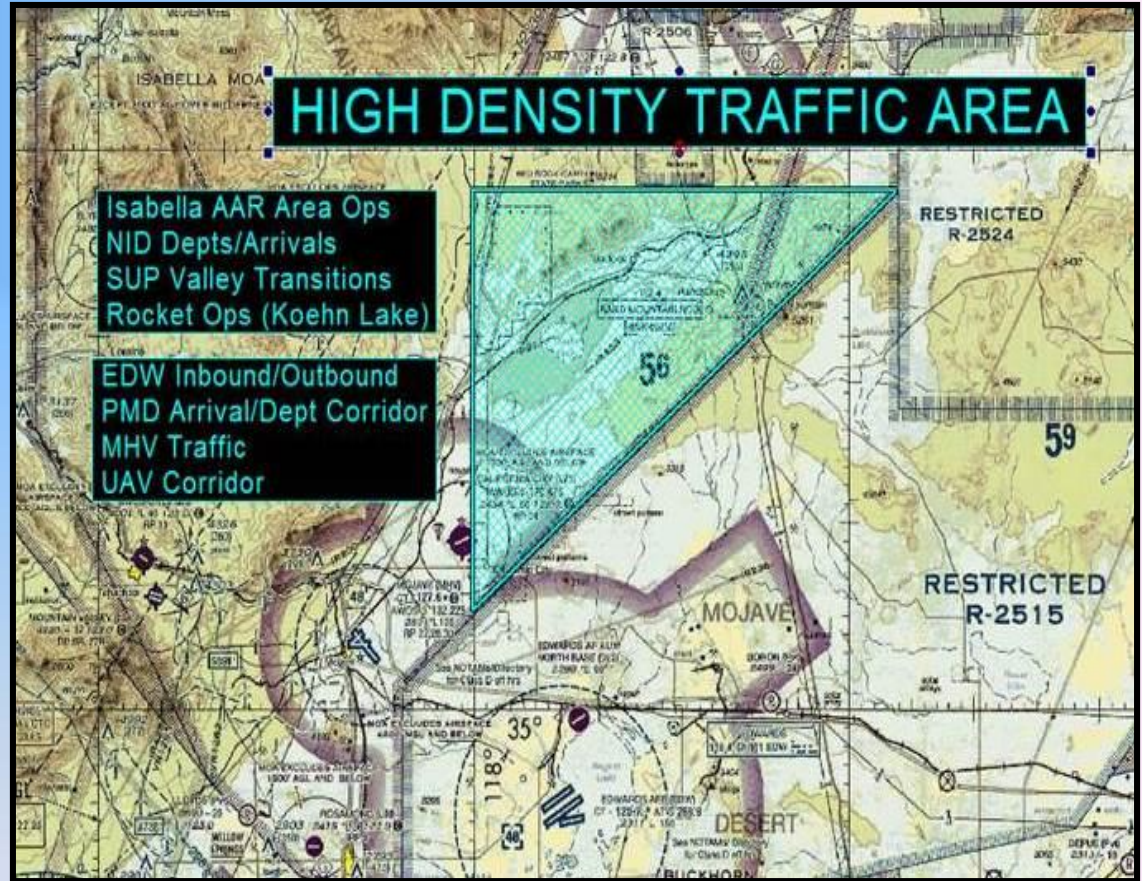




R-2508 Annual Users Briefing

High Density Traffic Area

- Defined by: 118 line on west, extended southern boundary of R-2506 on north, boundary of R-2515 on southeast
- Confluence of large variety of activities, missions, platforms
- Majority of Incident Reports occur in this area
- Aircrews should expect numerous traffic calls and request updates as needed

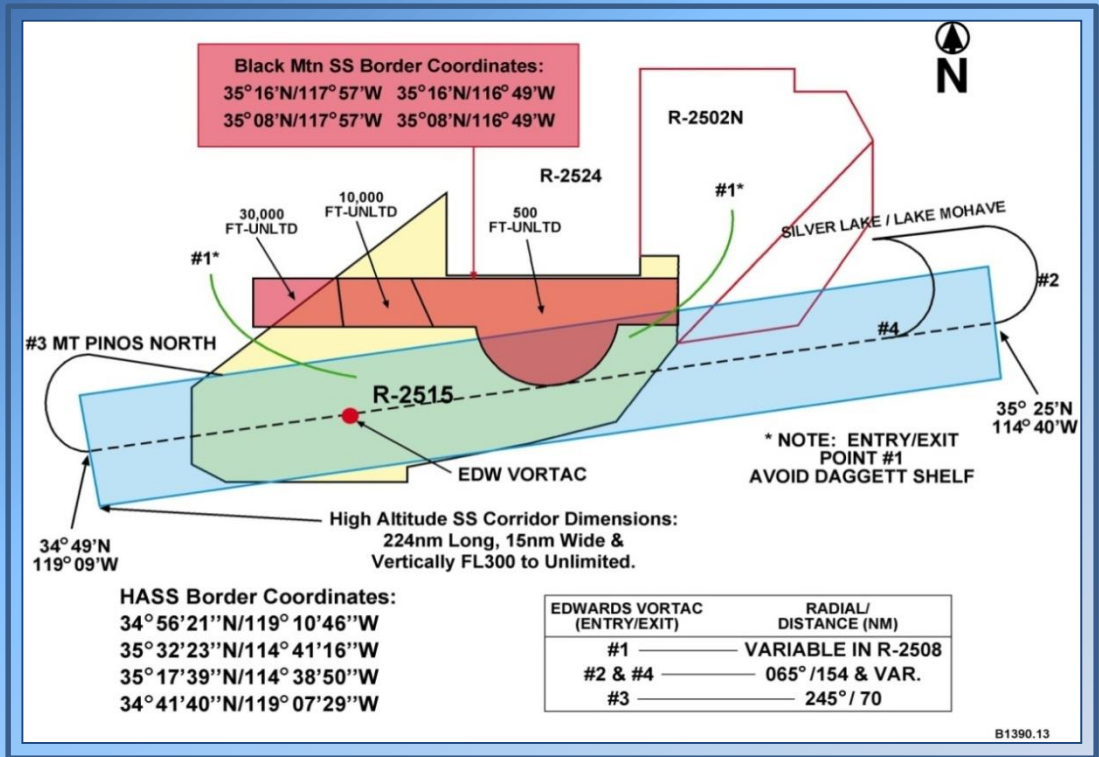




R-2508 Annual Users Briefing

Special Activity Areas

- Supersonic Areas
- Black Mountain Supersonic
 - Tiered Bottom
 - SPORT must be open
- High Altitude Supersonic
 - At or Above FL300
 - Entry/Exit 1 within R-2515
 - Other Entry/Exit Point usage requires prior coordination with SPORT and LA Center



Supersonic operations

- Only in authorized supersonic areas
- Refer to R-2515 in-flight procedures (412TW 13-100) regarding use of High Altitude and Black Mountain areas, additional information available through the Edwards Airspace Management Office DSN 527-2515 or 277-2515
- Schedule Supersonic Operations with 412TW Center Scheduling. Same Day: DSN 527-3940 next day or beyond DSN 527-4110. Include in Remarks Section of CCF Airspace Request Form.

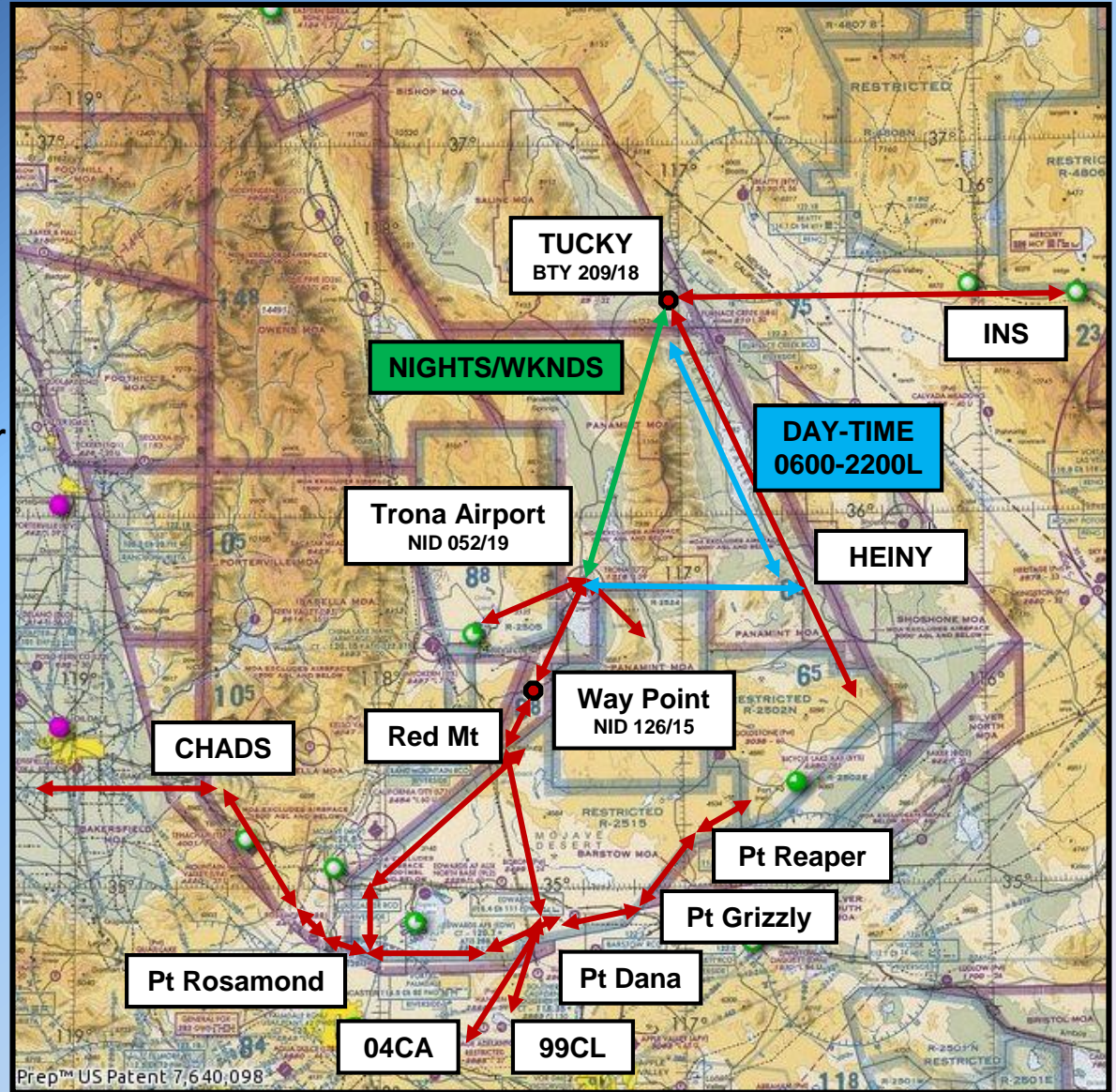




R-2508 Annual Users Briefing

UAS/RPA Transition Routes

- All Transitions flown at FL190 or FL200 Correct Alt/Direction of Flt
- GREEN RTE: Authorized only after normal flying complete 2200 – 0600L Mon-Fri, weekends, or FL400 and above.
- BLUE RTE: For use during normal Flt Ops 0600 – 2200L Mon-Fri
- R-2505 – R-2524 Transitions:
 - Authorized directly across Trona Corridor (no loitering)
 - Min Alt: FL190
 - Mode 3 & ATC com required





R-2508 Annual Users Briefing

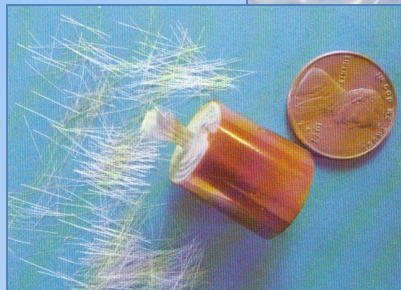
Chaff & Flares

Chaff/ECM

- Requires specific frequency management approvals (usually via unit)
- Notify CCF of Chaff/ECM activity when scheduling airspace (remarks section)
- Additional (internal) range rules may apply

Flares

- Internal restricted areas ONLY & requires specific Using Agency approval





R-2508 Annual Users Briefing

Lights Out & Targets of Opportunity

Lights-Out Operations

- May be conducted within internal restricted areas
- Within R-2508 IAW Unit/CCB LOP

Do Not Select Targets of Opportunity

- Highlighting test aircraft may result in a security violation or interruption of an expensive test

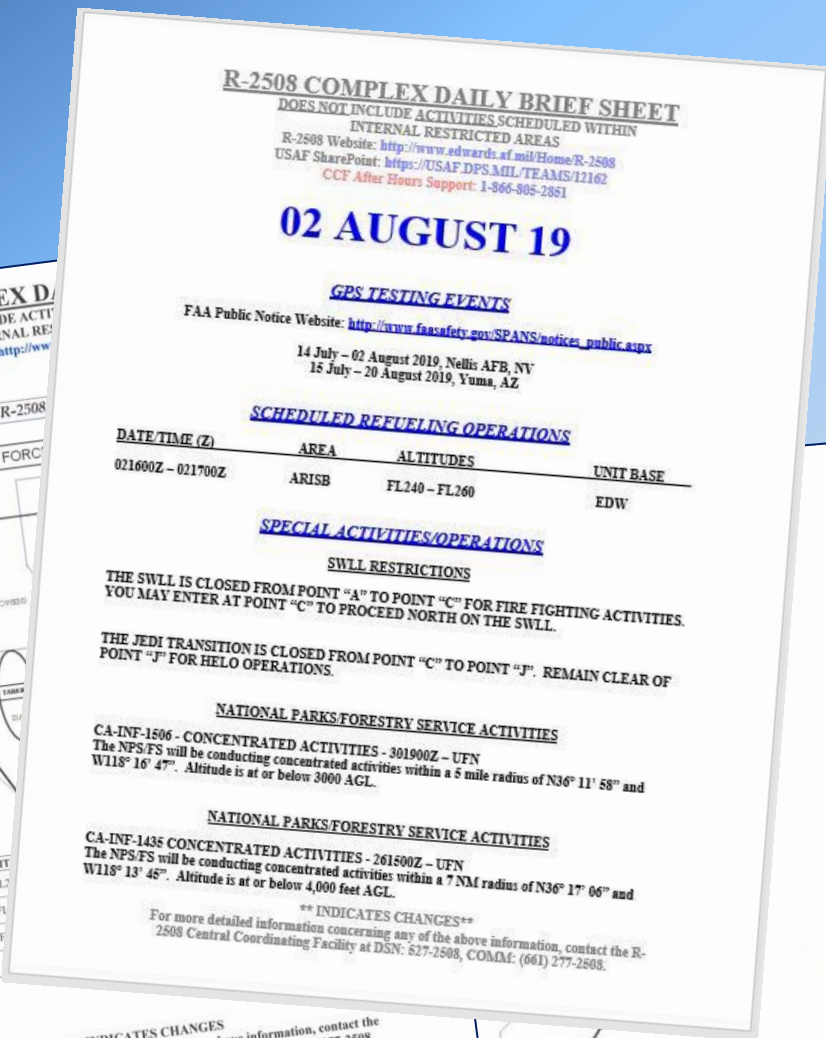
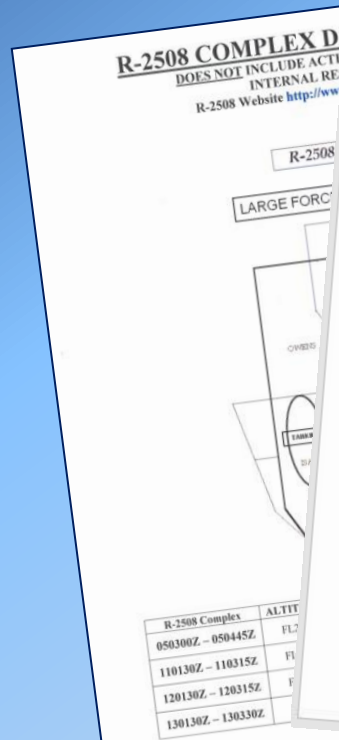




R-2508 Annual Users Briefing

R-2508 Complex Daily Brief Sheet

- What's going on the next day
- AAR Activity/UAS Transitions
- TFRs/LFEs/small UAS Activity
- Unusual/Special Operations
- Future Operations



**** INDICATES CHANGES**
 For more detailed information concerning any of the above information, contact the R-2508 Central Coordinating Facility at DSN: 527-2508, COMM: (661) 277-2808.

CREECH TO 02N	ALTITUDE	RETURN	ALTITUDE	CALL SIGN
031730Z-031800Z	FL200	040200Z-040230Z	FL190	REAPER 1
031530Z-031600Z	FL200	040500Z-040530Z	FL190	GRIM 1
041730Z-041800Z	FL200	050200Z-050230Z	FL190	REAPER 1
041530Z-041600Z	FL200	050500Z-050530Z	FL190	GRIM 1
051730Z-051800Z	FL200	060300Z-060330Z	FL190	REAPER 1
051530Z-051600Z	FL200	060500Z-060530Z	FL190	GRIM 1

**** INDICATES CHANGES**
 For more detailed information concerning any of the above information, contact the R-2508 Central Coordinating Facility at DSN: 527-2508, COMM: (661) 277-2808.



R-2508 Annual Users Briefing

IFR Flight Planning

- Flight Plans should be filed with 2 separate legs...
- Leg 1: Departure point, route of flight, R-2508 entry point, R-2508 as destination.
- Leg 2: R-2508, R-2508 exit point, flight route, destination airport/fix
- Do not file a delay in the Complex
- Filing a delay may result in the loss of the second half of your flight plan
- May result in extensive delay in receiving IFR Clearance out of area

The image shows two overlapping FAA flight planning forms. The top form is DD Form 175, MAY 86, titled 'FLIGHT PLAN'. It includes sections for 'BASE OPERATIONS USE', 'REMARKS', 'HANK AND HUNOR CODE', 'FUEL ON BOARD', 'SIGNATURE OF APPROVAL AUTHORITY', 'DUTY PILOT', 'COMMAND', 'CREW/PASSENGER LIST', 'WEATHER', 'PILOT BRIEFING', 'STOPOVER', 'DEPARTURE POINT', 'DEPARTURE TIME', 'CRUISING ALTITUDE', 'ROUTE OF FLIGHT', 'AIRPLANE CALL SIGN', and 'AIRPLANE DESIGN AND TD CODE'. The bottom form is FAA Form 7233-1 (6-20), titled 'FLIGHT PLAN'. It includes sections for '1. TYPE', '2. AIRCRAFT IDENTIFICATION', '3. AIRCRAFT TYPE/SPECIAL EQUIPMENT', '4. TRUE AIRSPEED', '5. DEPARTURE POINT', '6. DESTINATION (Name of airport and city)', '7. FUEL ON BOARD', '8. ROUTE OF FLIGHT', '9. ALTERNATE AIRPORT(S)', '10. EST. TIME ENROUTE', '11. REMARKS', '12. DESTINATION CONTACT/TELEPHONE (OPTIONAL)', '13. PILOTS NAME, ADDRESS & TELEPHONE NUMBER & AIRCRAFT HOME BASE', '14. COLOR OF AIRCRAFT', and '15. NUMBER ABOARD'. Both forms include a 'FSS ON ARRIVAL' field.

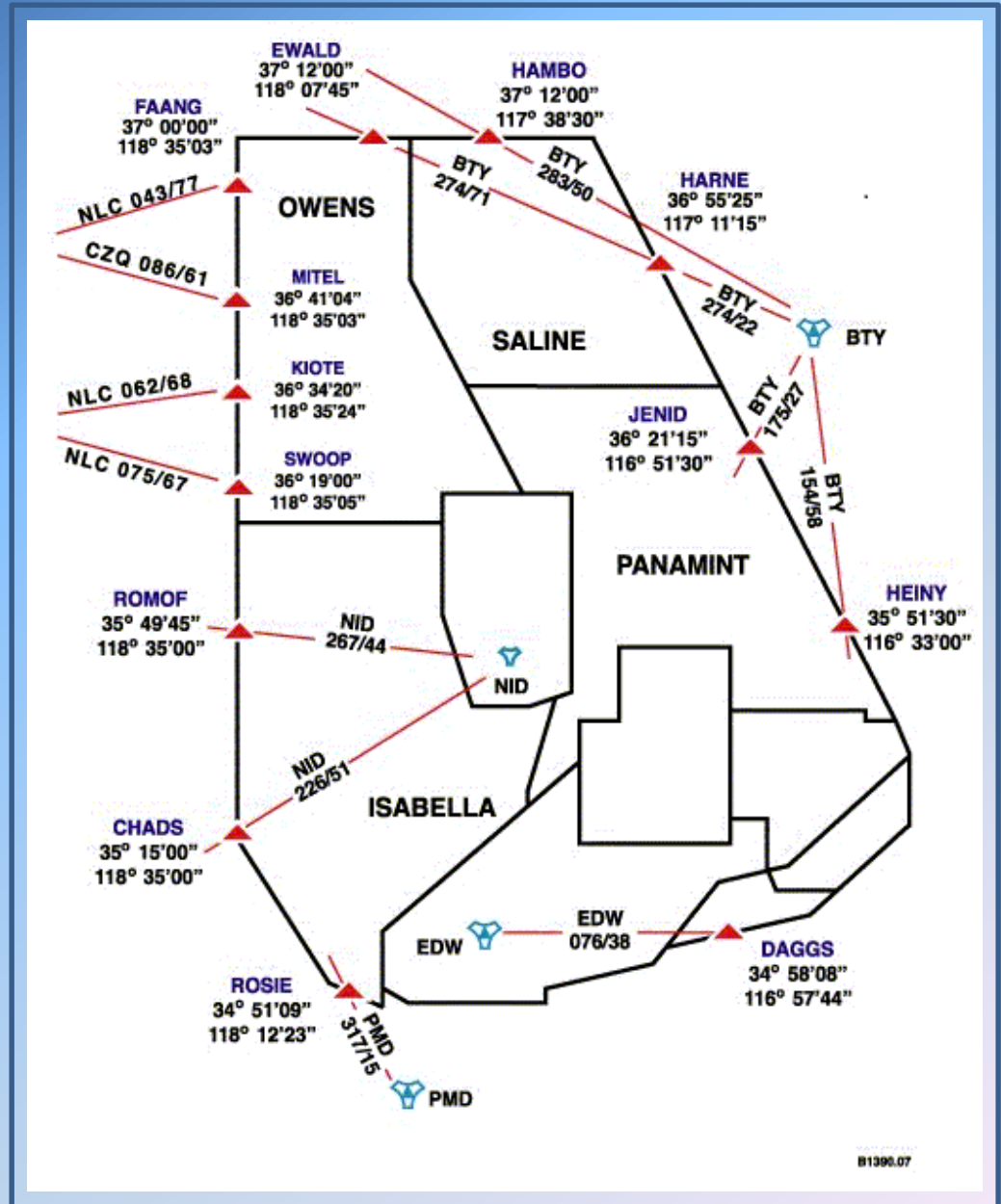




R-2508 Annual Users Briefing

Entry/Exit Points Flight Plan Entries...

- Use Complex entry/exit points during flight planning to alert Joshua/Center of your intentions.
- FAANG/MITEL/KIOTE/SWOOP ROSIE/DAGGS can be filed by name (others by coords or RAD/DME)
- *NID TACAN is unmonitored when China Lake airfield is closed.





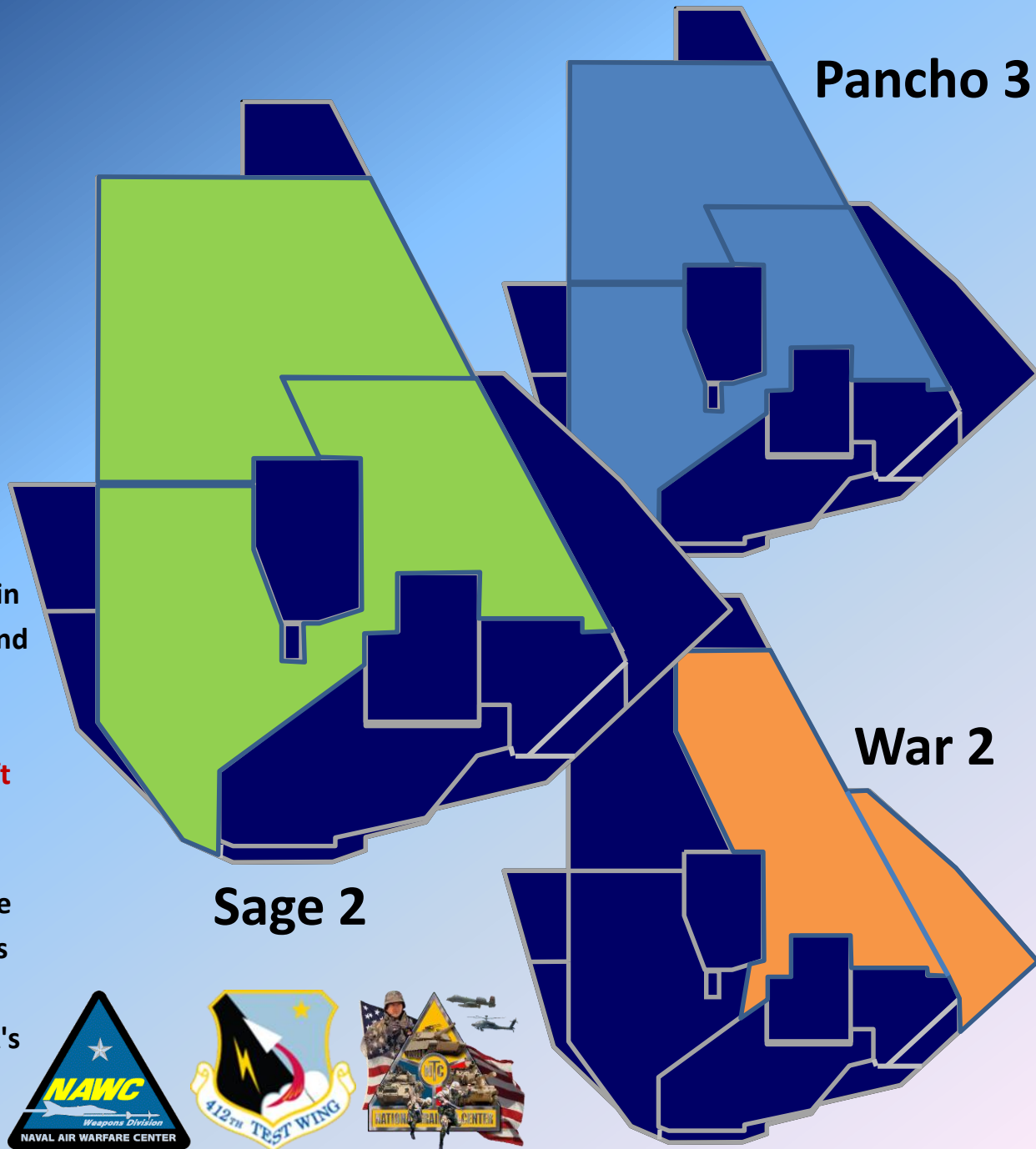
R-2508 Annual Users Briefing

Complex Clearances

SAGE 2: Isabella, Owens, Saline, and Panamint, FL290 and below.

PANCHO 3: Clearance to operate within Isabella and Panamint work areas at and below FL500, and Owens and Saline work areas at and below FL290... **Only EDW, NID, PMD, and NLC based aircraft are authorized a PANCHO 3.**

WAR 2 Clearance: (Green Flag Participants Only) Clearance to operate in the Saline and Panamint Work Areas at and below FL290, Shoshone MOA, and Shoshone North and South ATCAA's at and below FL230.





R-2508 Annual Users Briefing

R-2508 Scheduling

CCF Office Hours - Monday thru Friday
0600-1800L, excluding Federal holidays

- Schedule NLT 1600L Day Prior
- Schedule NLT 1600L Friday for Weekend Operations
- After hours schedule changes: Call CCF After Hours Number 1-866-805-2851
- Include internal restricted areas scheduled with applicable Using Agency





R-2508 Annual Users Briefing

Scheduling

Why CCF Needs your Airspace
Request Form NLT 1600L Day Prior
(Friday for Weekends)

Airspace Activation, Release and
Recall Information is sent to
Los Angeles Center to let the FAA
know what the military is
scheduled to use.

Off Station Users “Must be briefed
& schedule R-2508 through CCF”

Late scheduling could result in
Mission Loss or Delay

R-2508 DAILY ACTIVATION NOTIFICATION
16 April 2010

AREA	FROM	TO	OVERFLIGHT ALT	REMARKS
02E		0700	240	
		0700	300	
		0700	HOT	
		0700	110	HOT
		0700	110	HOT
			RLSD	NOT RLSD
			RLSD	RLSD

R-2508 CENTRAL COORDINATING FACILITY
EDWARDS AIR FORCE BASE, CALIFORNIA
AIRSPACE “RELEASE AND RECALL”
After Hours Phone Number: 1-866-805-2851

Page 2 of 2

II. (Contd.) MDA/ATCAA Release and Recall

AREA	ACTIVATED FROM	ACTIVATED TO	AT/OR BELOW ALT
Panamint	090100	090200	300
	090200	090500	400
	090500	090515	290
	090515	090530	130
	090530	090600	300
	090100	090200	400
Saline	090200	090515	300
	090500	090530	290
	090515	090600	130
	090530	090500	300
Shoshone MDA	090200	090500	300
Shoshone North ATCAA	090200	090500	300

R-2508 CENTRAL COORDINATING FACILITY
EDWARDS AIR FORCE BASE, CALIFORNIA
AIRSPACE “RELEASE AND RECALL”
After Hours Phone Number: 1-866-805-2851

Page 1 of 2

I. Restricted Area Release and Recall for period starting 090100Z April 2010

AREA	RELEASED FROM	RELEASED TO	AT/OR ABOVE ALT	REMARKS
R-2502E	090100	091300	240	
R-2502N	090100	091300	240	
R-2502A	090100	091300	240	
R-2505	090100	091300	290	
ITX SHELF	090100	091300	RLSD	
R-2506	090100	091300	110	
R-2508	090100	091300	RLSD	
R-2515	090100	091300	RLSD	
	090100	091300	RLSD	
R-2524	090401	090400	HOT	
	090615	090614	HOT	
	090701	090700	060	
	090100	091300	HOT	
	090100	091300	060	
	090100	091300	050	

II. MDA/ATCAA Release and Recall

AREA	ACTIVATED FROM	ACTIVATED TO	AT/OR BELOW ALT	REMARKS
Barstow East ATCAA	090100	090515	230	
Barstow MDA	090100	090515	180	
Barstow West ATCAA	090100	090515	300	
Bishop MDA	090100	090200	180	
Buckhorn MDA/ATCAA	090100	090530	180	
Isabella	090500	090500	300	
	090100	090530	100	
	090330	090330	420	
	090500	090500	400	
	090515	090515	400	
	090530	090530	300	
	090100	090600	290	
	090330	090330	130	
	090500	090500	420	
	090515	090515	400	
	090530	090530	300	
	090600	090600	290	
			130	

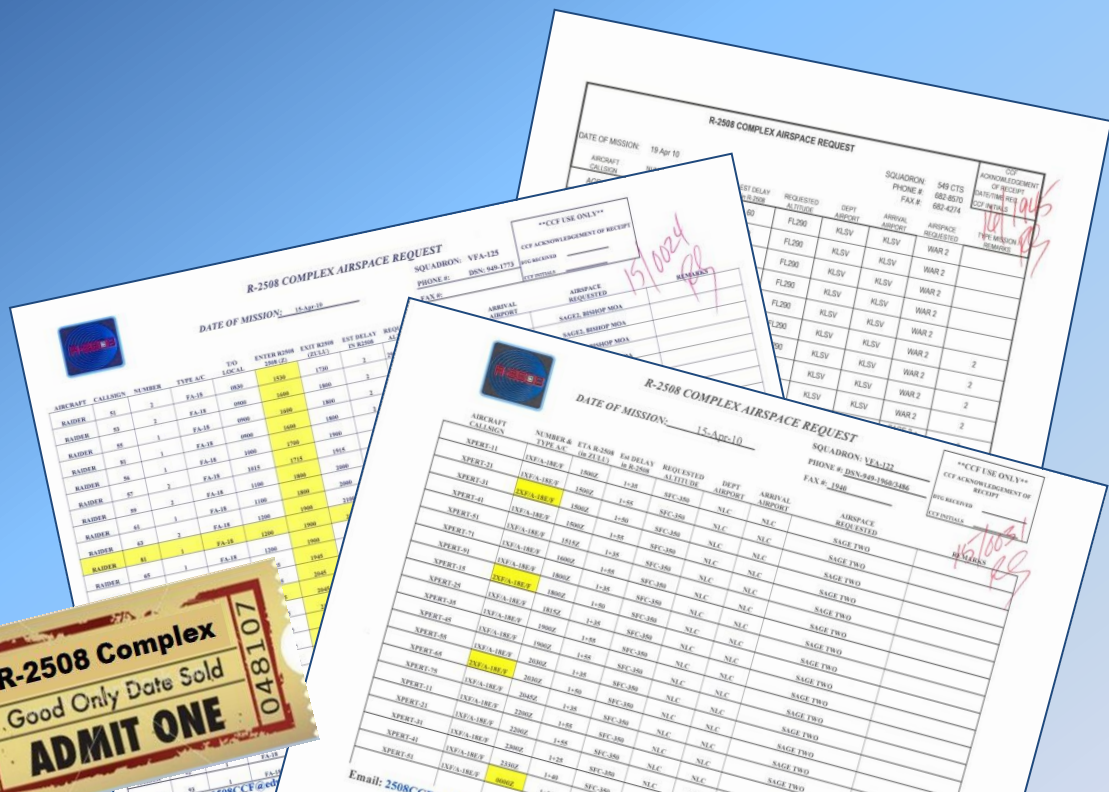




R-2508 Annual Users Briefing

Scheduling

- Scheduling data used to Generate ATC Flight Plan Information and Flight Progress Strip for Joshua
- Flight Strip is Your Ticket for entry into the Complex
- Use R-2508 Complex Airspace Request Form and Submit via Email (no fax please)
- Units will receive return acknowledgement
- Changes to received schedules MUST be called in, emailed to CCF



AGR011		2145	S, T, SHN, Ø2N, Ø2E, SHS, SH	29Ø		
F16	LSV					
1F3Ø3824G33891						
RADER51		153Ø	I, O, S, T, BI	29Ø		
F18	NLC					
1F3Ø3456G33851						
XPERT11		15ØØ	I, O, S, T	35Ø		
F18	NLC					
1F3Ø3486G33852						



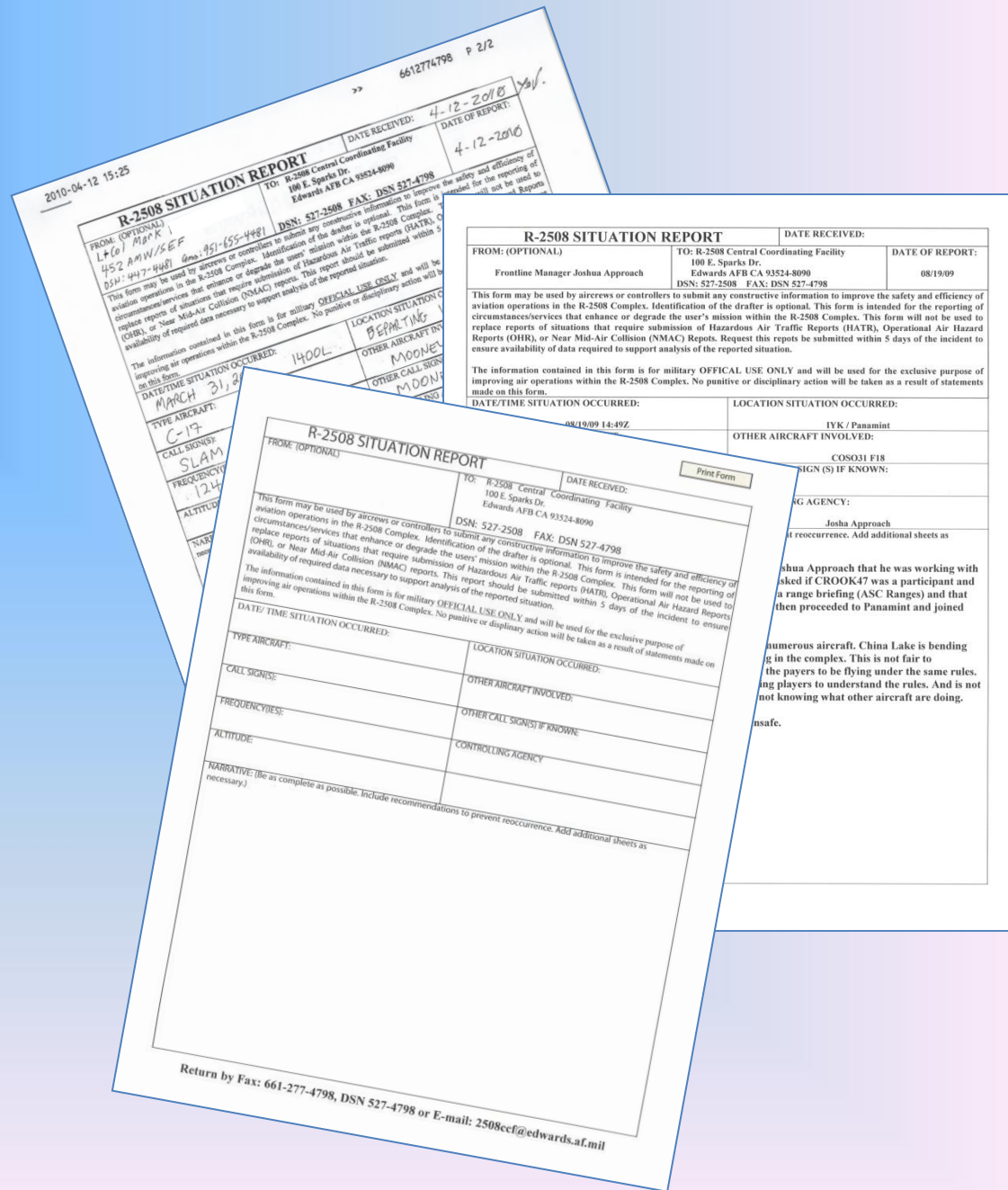


R-2508 Annual Users Briefing

SITREP

(R-2508 Situation Report)

- Official Communication
- Official Response
- Don't wait too long...



Return by Fax: 661-277-4798, DSN 527-4798 or E-mail: 2508ccf@edwards.af.mil



R-2508 Annual Users Briefing

What's Available Online...

- R-2508 Daily Flying Schedule posted online Monday Thru Friday at 0700L
- Includes Work Areas and Mission Profiles as provided on R-2508 Airspace Request Form
- Access requires .mil email address and CAC log on



UNCLASSIFIED

Site Actions Browse Page

R-2508 Complex Enhanced Advisory Service

Home

Libraries
AFKN_Docs

Lists
Announcements
Calendar
Links
Tasks

Discussions

Recycle Bin
All Site Content

Image Viewer

To link to an image, open the tool pane and then type a URL in the **Image Link** text box.

Welcome to your site

AFKN_Docs

<input type="checkbox"/> Select	Type	Name	Modified	<input type="checkbox"/> Modified By
	Folder	R-2508 24 Hour Schedule	5/23/2013 21:23	Blankenship, Andrew D CTR USAF AMC AMC/AFLCMC ESC HIB ADM
	Folder	R-2508 Daily Brief Sheet	5/23/2013 21:23	Blankenship, Andrew D CTR USAF AMC AMC/AFLCMC ESC HIB ADM
	Folder	R-2508 Documents	5/23/2013 21:23	Blankenship, Andrew D CTR USAF AMC AMC/AFLCMC ESC HIB ADM
	Folder	R-2515 Documents	7/2/2013 11:05	SANDERS, MARVIN D CIV USAF AFMC 412 OSS/OSCC
	Folder	Sidewinder Low Level Route	5/23/2013 21:23	Blankenship, Andrew D CTR USAF AMC AMC/AFLCMC ESC HIB ADM
	Document	SAMPLE dd2875	8/13/2013 11:00	SANDERS, MARVIN D CIV USAF AFMC 412 OSS/OSCC

+ Add document

AFNET EIS SharePoint Account for CCF Online Information - 24 Hour Schedule & Daily Brief Sheet:

<https://USAF.DPS.MIL/TEAMS/12162>

Non-USAF agencies must setup an AFNET EIS Sharepoint Account.

- Contact the 412th OSS IAO at DSN: 525-4269 or COMM: (661) 525-4269.
- Requirements: A current Information Awareness training certificate
- Complete DD Form 2875.

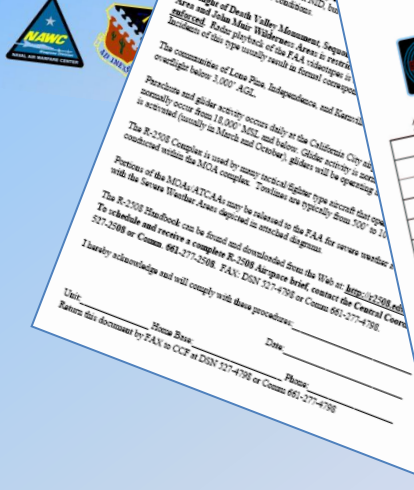
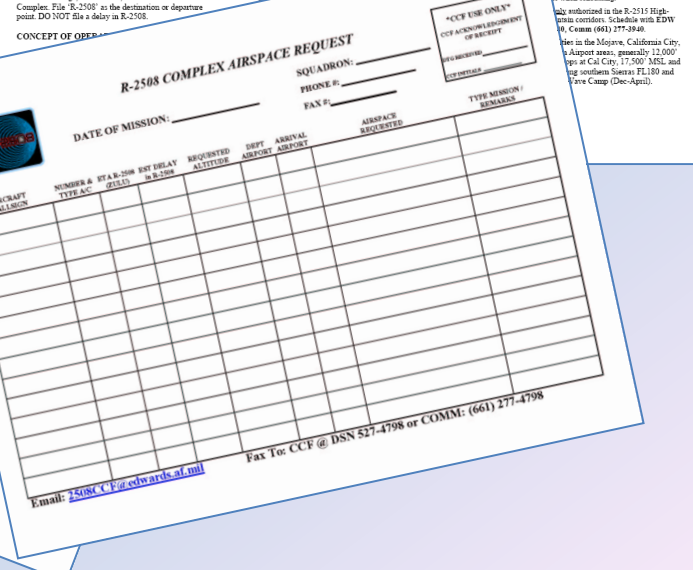
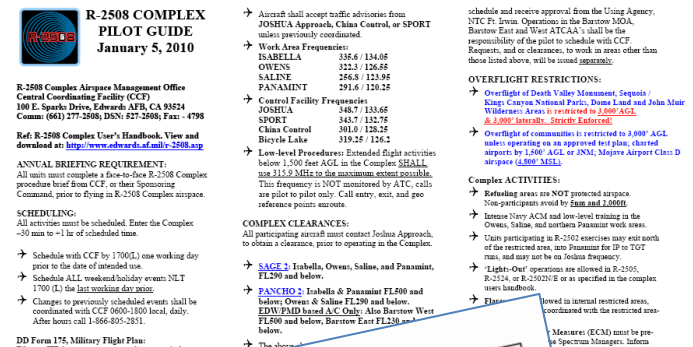
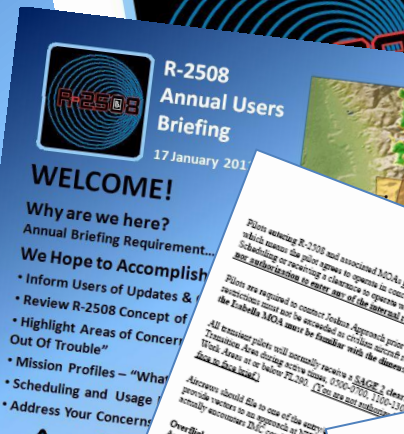
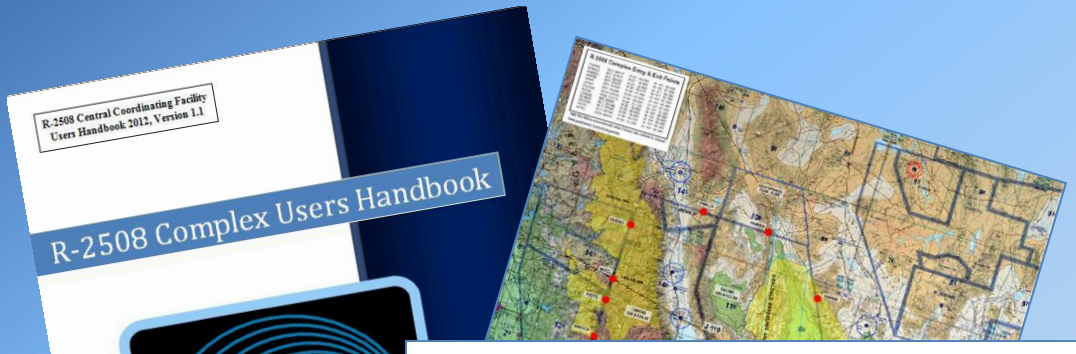


R-2508 Annual Users Briefing

What's Available Online...

- Users Handbook
- This Briefing
- Airspace Request Form
- Situation Report (SITREP)
- Pilot Guide & Map
- NID Transient Pilot Brief
- Where?

<http://www.edwards.af.mil/About/R-2508>





R-2508 Annual Users Briefing

R-2508 Central Coordinating Facility



Questions?

- Co-Located with Joshua Approach
- Here to Support your Operations
 - DSN 527-2508 or Commercial 661-277-2508
 - 2508ccf@us.af.mil
 - Online Information
 - <http://www.edwards.af.mil/About/R-2508>
 - <https://USAF.DPS.MIL/TEAMS/12162>

