



412th OSS

412th Operations Support Squadron

Drop Zone Brief





DZ Environmental Concerns



- ❑ Cargo Drops that miss intended target and fall outside of DZ boundaries
 - ❑ If vehicles or machinery (outside foot traffic) is required to retrieve; this must be coordinated with 412 CEG/CEVA at DSN 527-1417
- ❑ All species highlighted are not limited to the each specific DZ. All could be found at or around all DZs

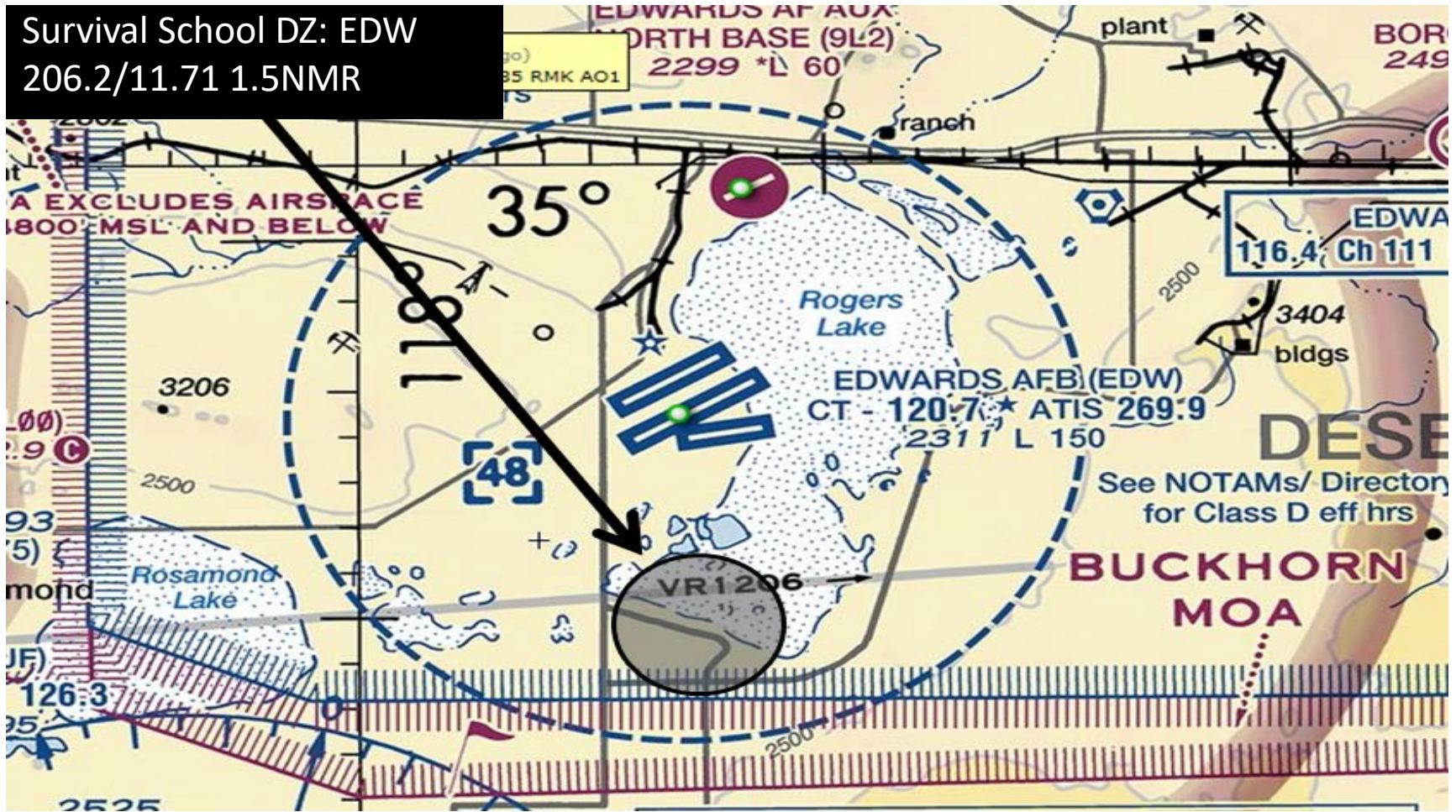


Survival School DZ



412 OSS

Survival School DZ: EDW
206.2/11.71 1.5NMR





Survival School DZ



412 OSS





Survival School DZ



412 OSS

- Authorized Use:**
 - 412 TW Test Parachute Program Only
 - Personnel drops only

- Description:**
 - Center point EDW 206.2/11.71
 - Avoidance area 1.5 mile radius from center/2.5NM for HAHO jumps
 - SFC - 500' above active altitude

- Activation:**
 - Airspace activated by NOTAM only through R-2515 airspace management (24 hrs prior)

- Scheduling:**
 - Units must schedule: Survival School DZ, R-2515, Alpha Corridor, and Buckhorn MOA

- Procedures:**
 - Must comply with 14 CFR Part 105
 - Users must be complex participant; must receive R-2508 and R-2515 airspace briefings
 - Jump aircraft will contact SPORT (Mission frequency or Muroc Common) prior to departure
 - SPORT may hold a/c on ground/specific altitude/delay or cancel as required for safety
 - Timing calls to DZ controller (3 mins, 2 mins, 1 min, jumpers away)
 - 1 min mark aircrew must request clearance from DZ controller and SPORT to proceed
 - SPORT exercises over airborne operations only
 - Non-Edwards assigned aircraft must have an approved support agreement and Letter of Procedure prior to conducting operations



Survival School DZ – Environmental Concerns



Desert Tortoise (DT)

- State and Federally listed threatened species protected by state and federal law
- Personnel must attend DT training prior to accessing the DZ



Desert Cymopterus

- A sensitive plant species
- Make every effort to avoid disturbing this plant





Survival School DZ – Air Drop Concerns



412 OSS

Burrowing Owls:

- Make every effort to avoid disturbing this and any other bird species since most birds on base are protected by Federal Law(s)



Mohave Ground Squirrel:

- State listed threatened species
- Make every effort to avoid disturbing, since protected by State Law



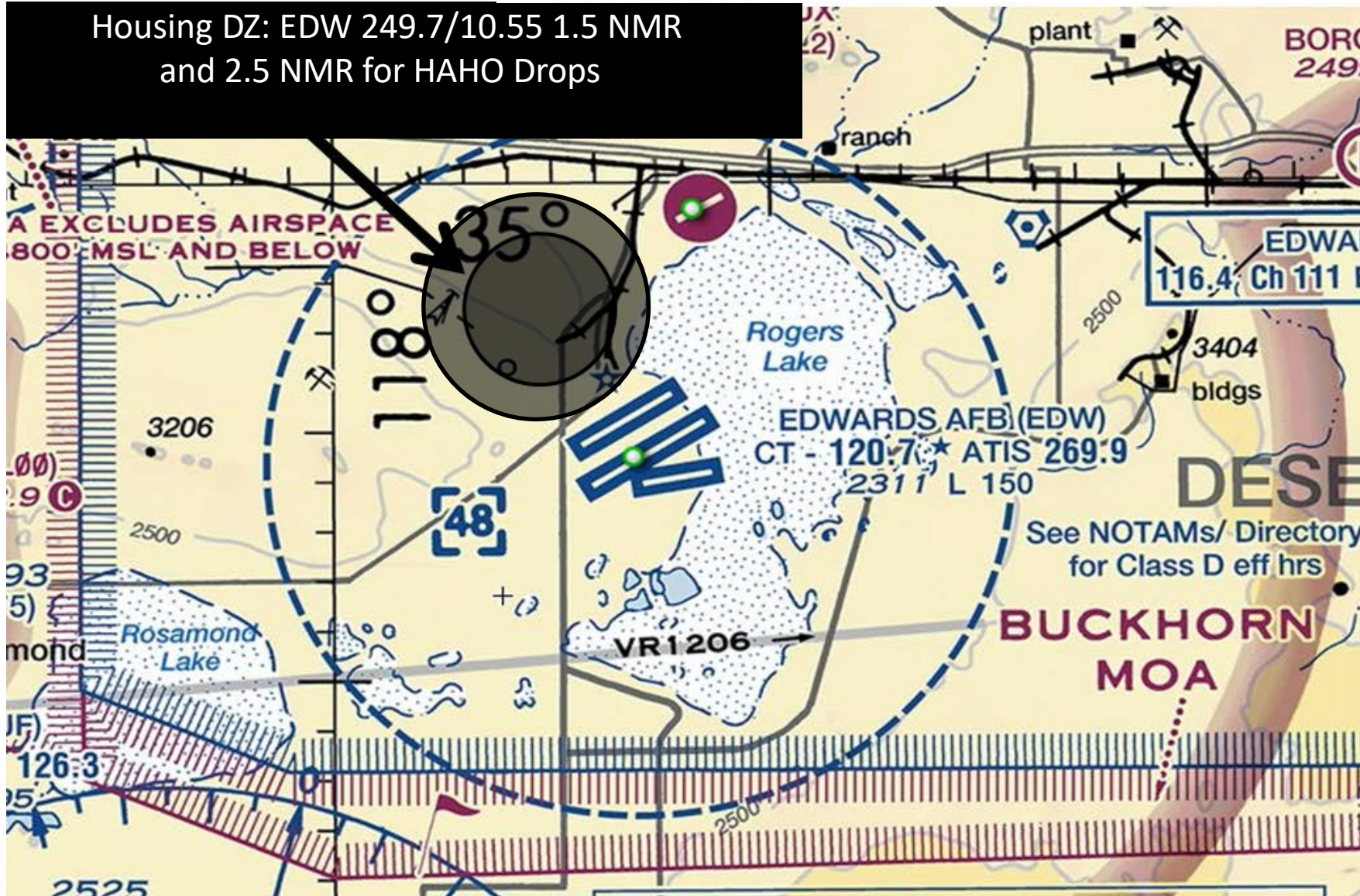


Housing DZ



412 OSS

Housing DZ: EDW 249.7/10.55 1.5 NMR
and 2.5 NMR for HAHO Drops





Housing DZ



412 OSS





Housing DZ



412 OSS

- Authorized Use:**
 - 412 TW Test Parachute Program Only, personnel drops only.
 - DZ is limited to non-static line drops with all release points contained within 1.5 mile avoidance zone

- Description:**
 - Center point EDW 249.7/10.55
 - Avoidance area 1.5 NMR from center/2.5NMR for HAHO drops
 - SFC - 500' above active altitude. Operations will not be scheduled above 13K MSL
 - The DZ 1.5 NM Avoidance area is with .5 NM from the EOD no fly area (SFC-5.3K)

- Activation:**
 - Airspace activated by NOTAM only through R-2515 airspace management (24 hrs prior)

- Scheduling:**
 - Units must schedule: Housing DZ, and R-2515

- Procedures:**
 - Must comply with 14 CFR Part 105
 - Users must be complex participant; must receive R-2508 and R-2515 airspace briefings
 - Edwards Tower/SPORT/DZ controller coordinate each drop
 - 3 Min prior call precedes each drop
 - Tower activates w/ SPORT. SPORT notifies all affect aircraft of DZ status
 - Non-Edwards assigned aircraft must have an approved support agreement or Letter of Procedure prior to conducting operations



Housing DZ – Environmental Concerns



Desert Tortoise (DT)

- State and Federally listed threatened species protected by state and federal law
- Personnel must attend DT training prior to accessing the DZ



Desert Cymopterus

- A sensitive plant species
- Make every effort to avoid disturbing this plant





Housing DZ – Air Drop Concerns



412 OSS

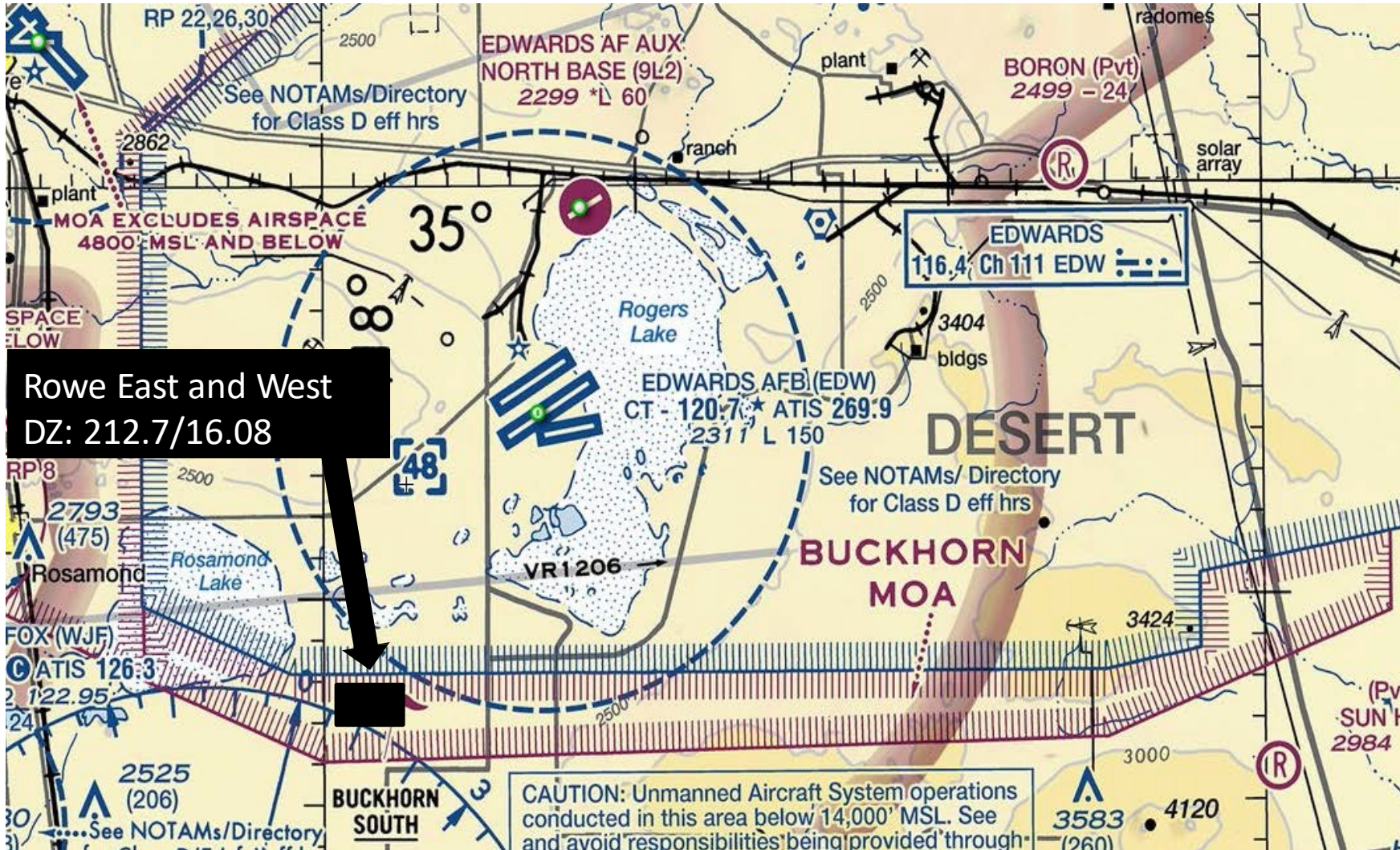
None.



Rowe East/West DZ



412 OSS



Rowe East and West
DZ: 212.7/16.08





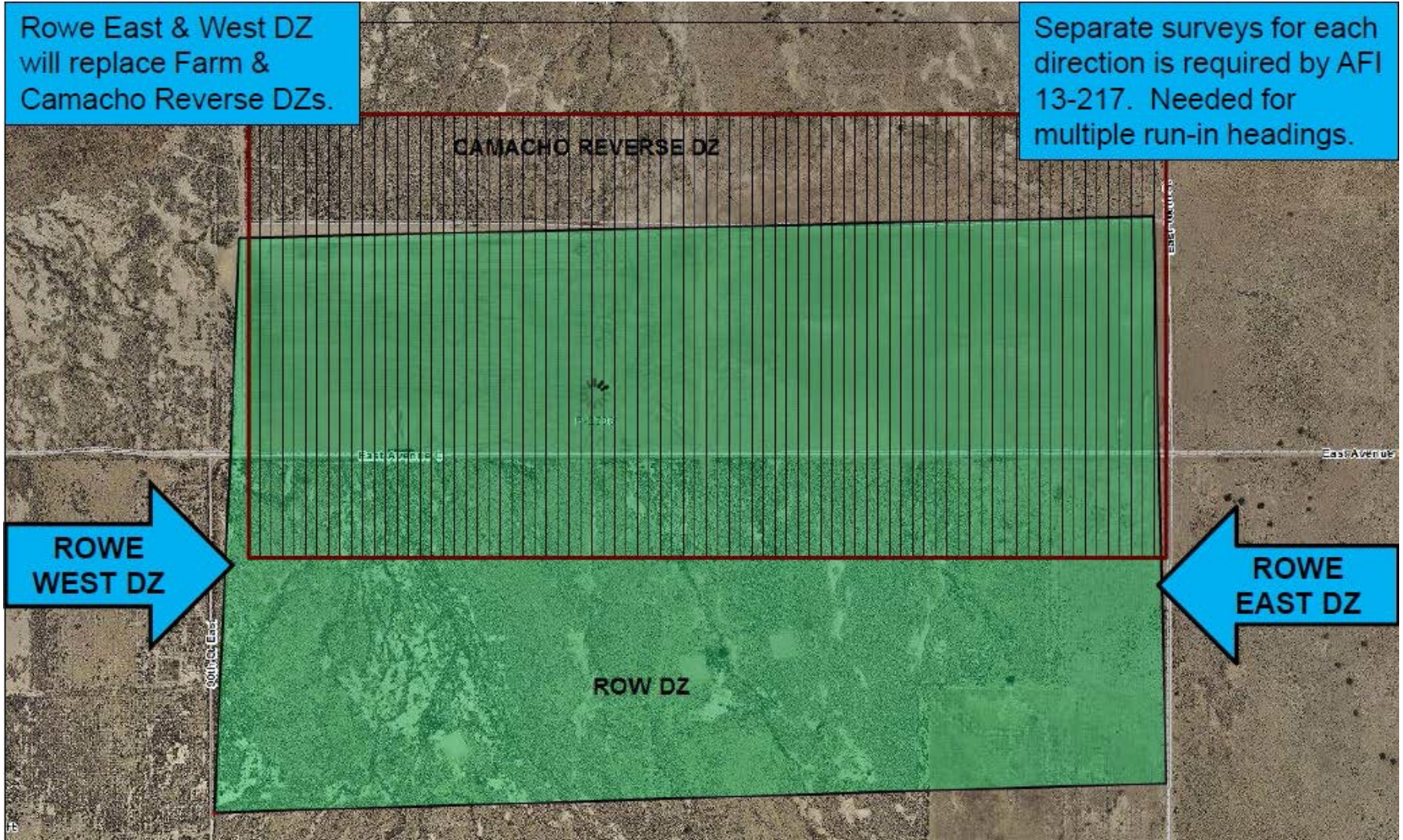
Rowe East/West DZ



412 OWS

Rowe East & West DZ will replace Farm & Camacho Reverse DZs.

Separate surveys for each direction is required by AFI 13-217. Needed for multiple run-in headings.

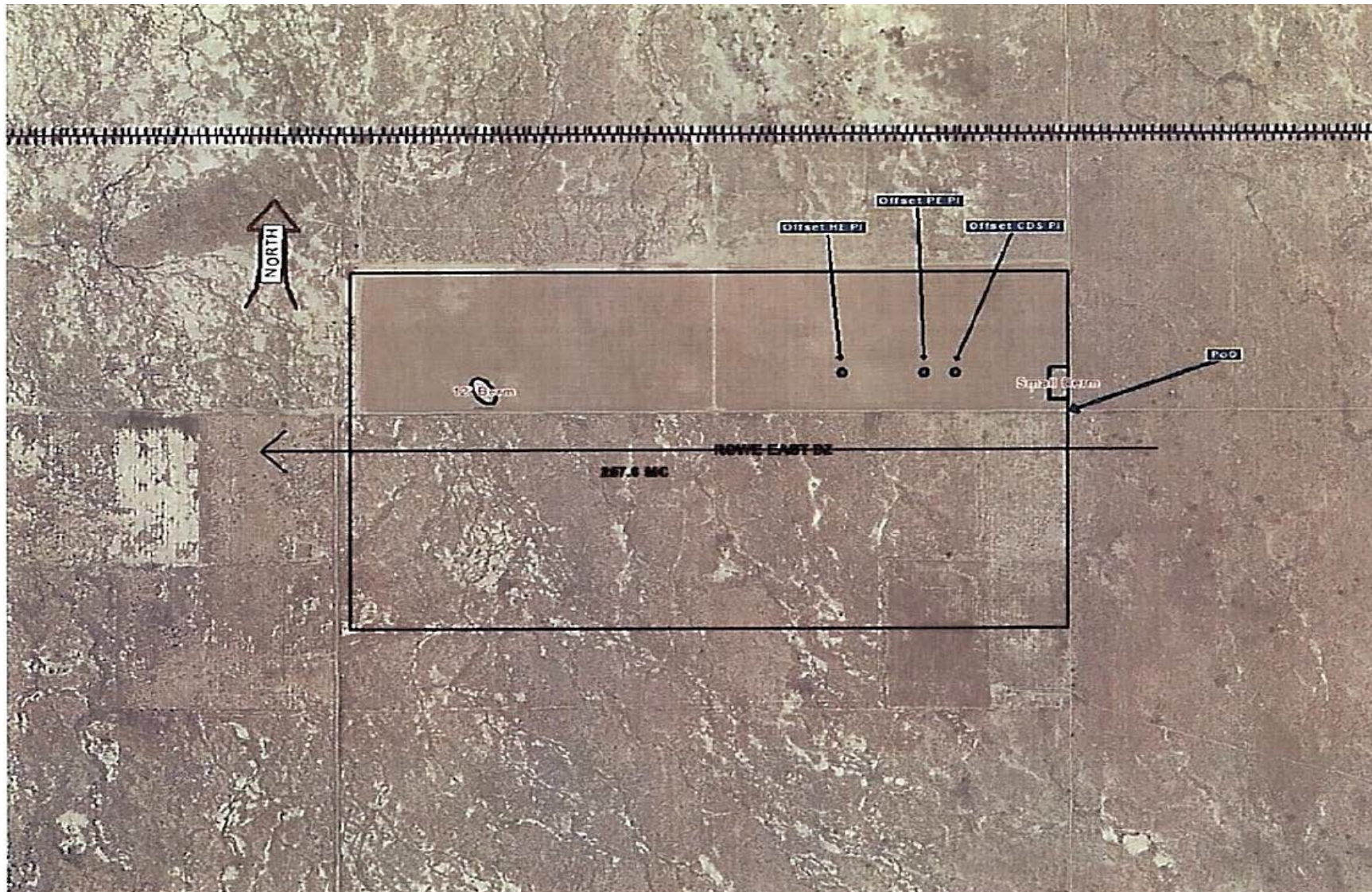




Rowe East/West DZ



412 OSS





Rowe East & West DZ



- Authorized Use:**
 - AMC published DZ, available for DoD aircraft
 - Personnel and cargo

- Description:**
 - Center point EDW 212.1/15.9 (N 34-47-31.9/W 117-57-39.4)
 - Avoidance area 2NMR from center point
 - DZ controlling agency requires users to offset PIs to avoid disturbing culturally sensitive areas

- Activation:**
 - Airspace activated by NOTAM only through R-2515 airspace management (24 hrs prior)

- Scheduling:**
 - Must schedule: Rowe East and Rowe West, Buckhorn MOA, Alpha corridor, and R-2515

- Procedures:**
 - Must comply with 14 CFR Part 105
 - Users must be complex participant; must receive R-2508 and R-2515 airspace briefings
 - Must be in communication w/ SPORT MRU or Joshua Control Facility (after SPORT hours)
 - DZ is located in/around several airspace control zones. Thorough study required prior to Ops
 - Fremont-Kramer Desert Wildlife Management Area located 9.2 NM East of DZ. Avoid by 2000' horizontally and vertically
 - Mojave Fringe-toed Lizard Conservation Area located 8.5 NM Southeast of DZ. Avoid by 2000' horizontally and vertically



Rowe E/W DZ – Environmental Concerns



- ❑ May encounter Burrowing Owls and other bird species in or in the vicinity of DZ
- ❑ Make every effort to avoid disturbing, since most birds on base are protected by Federal Law(s)





Rowe E/W DZ – Air Drop Concerns



412 OSS

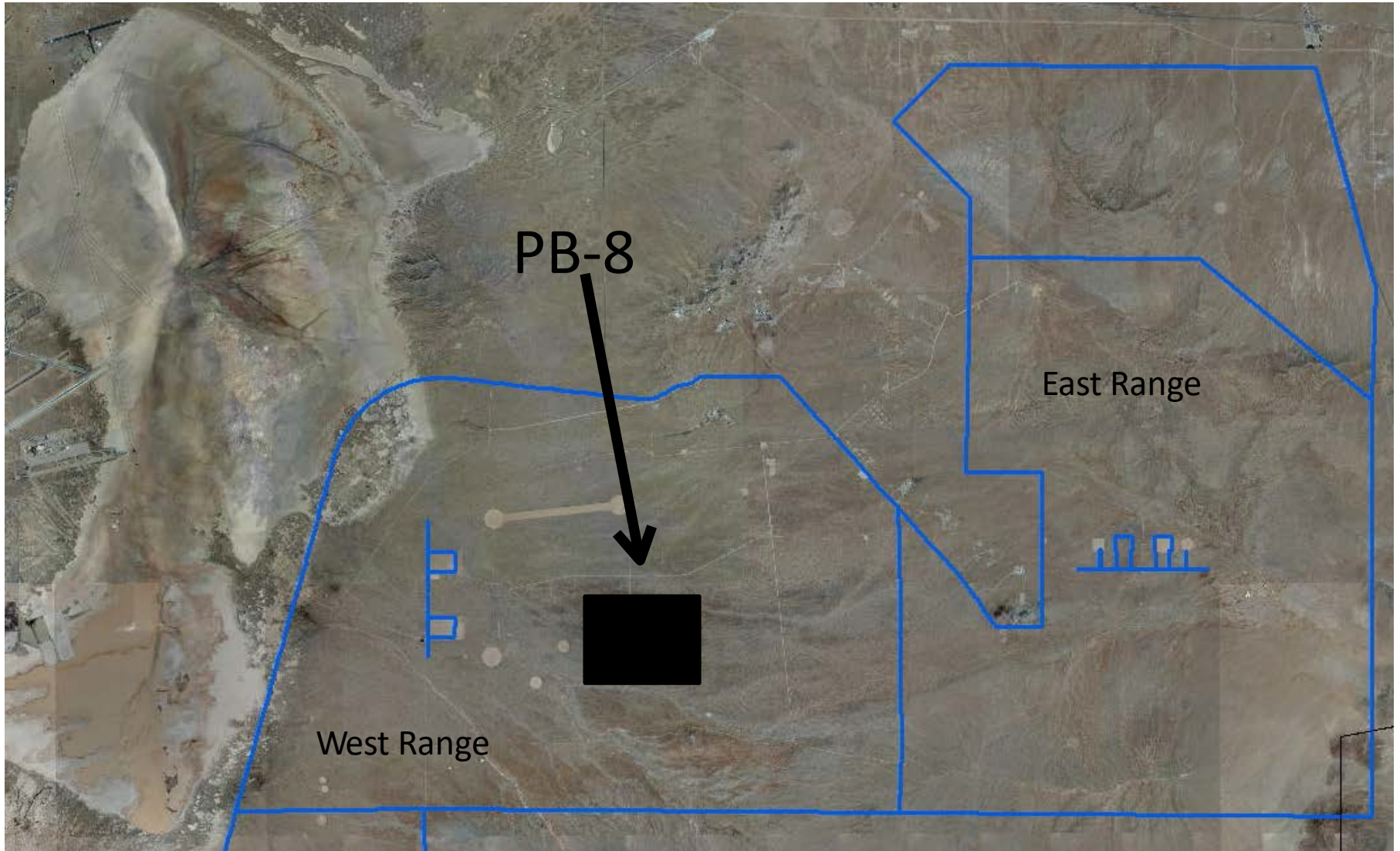
- Numerous National Registered of Historic Places eligible sites in vicinity of DZ.
- No off-road driving outside of the graded portion of the DZ without a Cultural Resources monitor.
 - 15lbs training bundles may be recovered w/o an archaeologist monitor only if recover is completed by foot
- An archaeologist monitor is required for all vehicle recoveries efforts that land outside the graded area. Contact 412 TW CE/CEV customer service at 661-277-1401.
 - After normal business hours, postpone recovery until an archeology monitor can be arranged.
- User is responsible for confirming all obstacle/hazard locations prior to conducting DZ operations.
 - Please see DZ survey Section 11



PB-8 DZ



412 OSS





PB-8 DZ



412 OSS

- Authorized Use:**
 - Published in ZAR for DoD Test missions, or 412 TW aircraft . Personnel and cargo

- Description:**
 - Center point EDW 163/7.39 (N 34-51.574/W 117-43.097)
 - SFC-Unlimited
 - PB-8 is regularly plowed and clear of obstructions except for a 4.5 sq. meter concrete pad at DZ centerpoint
 - Use caution for soft sand throughout and 3 triangular radar reflectors on DZ centerline(max height approx. 1 meter)

- Scheduling:**
 - Units must schedule: East/West Range, Buckhorn MOA, Alpha corridor, and R-2515
 - Recommend scheduling 2 weeks in advance
 - Off-station users may be out-prioritized, even if scheduled

- Procedures:**
 - Must comply with 14 CFR Part 105
 - Users must be complex participant; must receive R-2508 and R-2515 airspace briefings
 - Must receive Range Safety Brief prior to operations
 - Contact SPORT MRU for in-flight airspace clearance
 - Keep doors closed until West of Hwy 395.
 - Use caution for Haystack Butte (N34-51.894/W117-37.004) 3412' MSL, 5 NM east of leading edge, 0.3 NM right of run-in centerline



PB-8 DZ – Environmental Concerns



412 OWS

Desert Tortoise (DT):

- State and Federally listed threatened species protected by state and federal law
- Personnel must attend DT training prior to accessing the DZ



Desert Cymopterus:

- A sensitive plant species
- Make every effort to avoid disturbing this plant





PB-8 DZ – Environmental Concerns



412 OSS

Burrowing Owls:

- Make every effort to avoid disturbing this and any other bird species since most birds on base are protected by Federal Law(s)



Mohave Ground Squirrel:

- State listed threatened species
- Make every effort to avoid disturbing, since protected by State Law





PB-8 DZ – Air Drop Concerns



412 OSS

- PB-8 is desert sand that is disked year round.

- Obstacles on or around DZ
 - 4.5 meter square concrete pad south of center point of DZ.
 - Rapidly rising terrain within all directions from center point of DZ. Please see DZ survey for details.

- Scheduling procedures. See DZ survey.



ENAD Drop Zone



412 OSS





ENAD Drop Zone



412 OWS

- Authorized Use:**
 - AMC published DZ, available for DoD aircraft. Personnel and cargo
- Description:**
 - Center point EDW 225.1/18.92 (N 34-48.709/W 118-04.104)
 - Located on Rosamond Lakebed SW of the approach end of Rwy 29
 - Seasonal DZ. DZ may be completely underwater in rainy months (Dec- Mar)
- Activation:**
 - Airspace activated by NOTAM only through R-2515 airspace management (24 hrs prior)
- Scheduling:**
 - Units must schedule: ENAD DZ, Buckhorn MOA, Alpha corridor, and R-2515
 - Recommend scheduling 2 weeks in advance
 - Off-station users may be out-prioritized, even if scheduled
- Procedures:**
 - Must comply with 14 CFR Part 105
 - Users must be complex participant; must receive R-2508 and R-2515 airspace briefings
 - Edwards Tower/SPORT/DZ controller coordinate each drop
 - 3 Min prior call precedes each drop
 - SPORT advises Tower with activation. SPORT notifies all affect aircraft of DZ status
 - Non-Edwards assigned aircraft must have an approved support agreement or Letter of Procedure prior to conducting operations



ENAD DZ – Environmental Concerns



- ❑ Avoid accessing this lakebed DZ when wet
 - ❑ Averts long lasting negative effects such as ruts to this critical resource

- ❑ We are in drought conditions
 - ❑ Water is what smooths/levels lakebed, critical to the Edward's mission



ENAD DZ – Air Drop Concerns



- ❑ Please contact 412 OSS Airfield Management at 661-277-2222 for Dry lakebed conditions.

- ❑ Obstacles/Hazards
 - ❑ **2**, 30' x 30' asphalt squares located within DZ
 - ❑ Please see survey for coordinates
 - ❑ **11**, 2 foot tall radar reflectors 490 meters WSW of DZ centerpoint.
 - ❑ **21**, up to 10 foot tall metal triangles paralleling DZ 200 meters South of DZ boundary.
 - ❑ **10**, 10 foot tall wooden poles spaced every 50' 47 meters N of DZ boundary.



DROP ZONES



412 OSS

Questions?