

Lactation Rooms

See Map on Reverse

Housing Area

- 1** B5210, 412 FSS, Rm 4
Amenities: Arm Chair/Couch, Sink, Outlet, Refrigerator, In Use Sign,
- 2** B6457, 412 FSS, Rm 5
Amenities: Multiple Person, Arm Chair/Couch, Sink, Outlet, Refrigerator, In Use Sign,
- 3** B6457, 412 FSS, Rm 10
Amenities: Multiple Person, Arm Chair/Couch, Sink, Outlet, Refrigerator, In Use Sign
- 4** B6457, 412 FSS, Rm 11
Amenities: Multiple Person, Arm Chair/Couch, Sink, Outlet, Refrigerator, In Use Sign
- 5** B6459, 412 FSS, Rm 2
Amenities: Arm Chair/Couch, Sink, Outlet, Refrigerator, In Use Sign

Main Base

- 6** B1609, 452 FLTS, Rm E-2
Amenities: Multiple Person, Outlet, In Use Sign, Computer with Afnet Connection
- 7** B1633, 452 FLTS, Rm 20
Amenities: Multiple Person, Arm Chair/Couch, Outlet, In Use Sign, Computer with Afnet Connection
- 8** B2750, 412 OG, Rm 125
Amenities: Multiple Person, Arm Chair/Couch, Outlet, Refrigerator, In Use Sign

The Air Force recognizes that breastmilk is the optimal food for growth and development of infants and encourages employees and management alike to have a positive, accepting attitude towards mothers and breastfeeding. We promote and support breastfeeding and breast milk expression by employees who are breastfeeding when they return to work. Breastfeeding reduces serious acute and chronic diseases, including obesity. Healthier employees and babies mean fewer employee absences and lower health care costs.



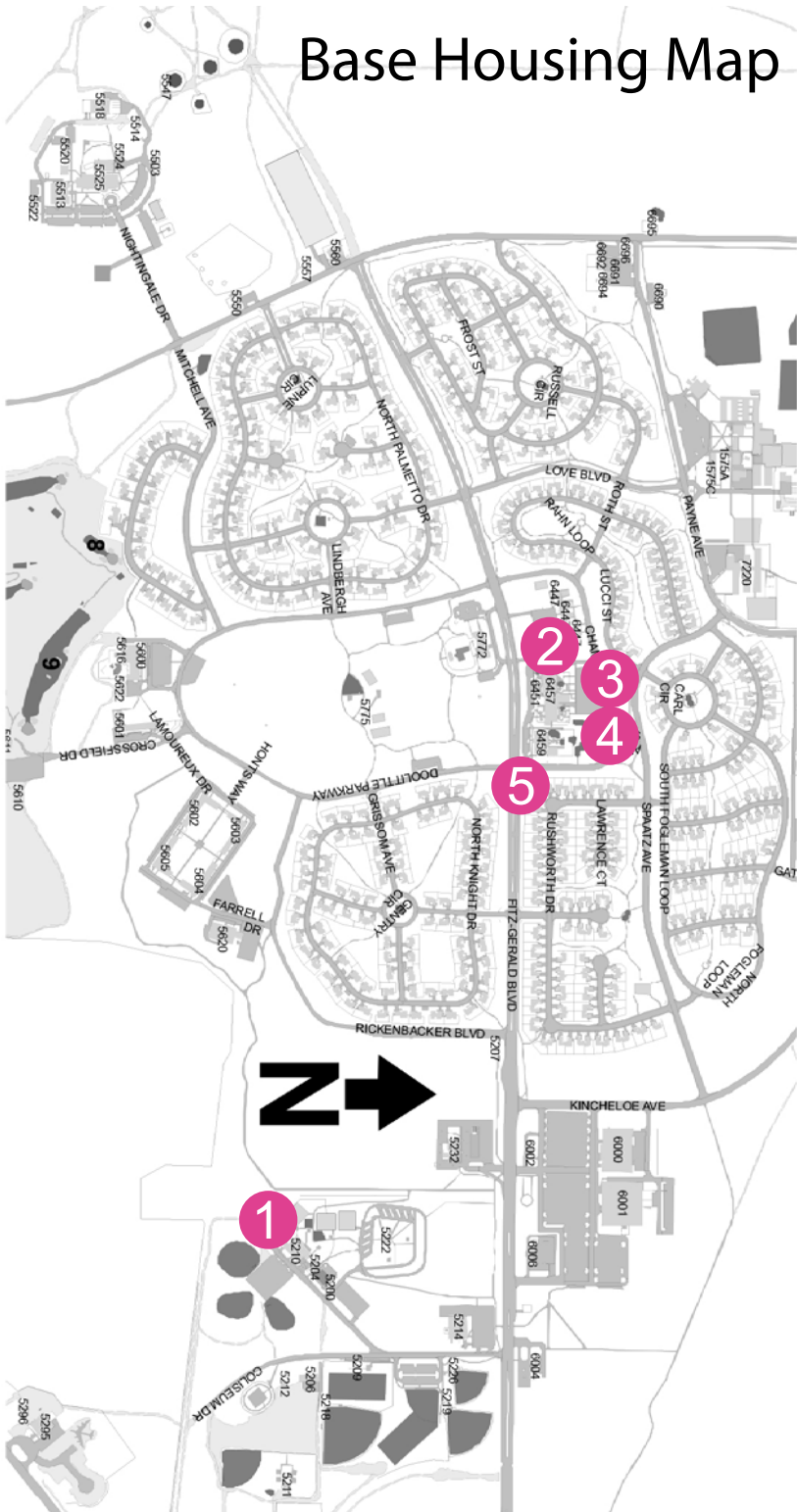
Resources

For more information contact the Edwards Chapter of La Leche League International at EdwardsAFBlalecheleague@gmail.com

Dr. Kara Garcia, 412th Medical Group
Pediatrician International Board Certified
Lactation Consultant (661) 277-7118

**Edwards AFB
Lactation Areas
Building Occupants
Only**

Base Housing Map



Main Base Map

